



# FN Series

---

수평형

수직형

IEC FLANGE

라인파워

## FN시리즈 특징

### 1. 소형·경량

출력축 반하부축 베어링을 DX부시를 사용하여 극소형, 경량화를 시켰습니다.

### 2. 고효율·치연마

최적설계 및 모든 기어를 연마하여 저소음과 효율 97%이상을 보장하며 수명, 강도를 증가시켰습니다.

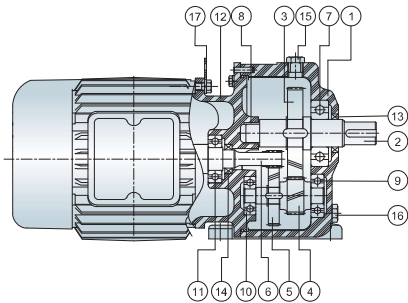
### 3. 취부의 자유

윤활제로 Grease를 사용하여 완전 밀폐 시킴으로써 취부를 자유롭게 했습니다.

### 4. 신속한 공급

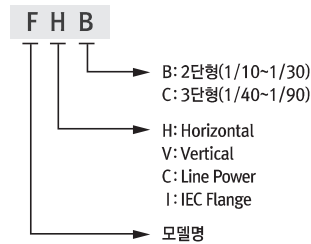
계획품 및 표준화된 모든 부품을 반제품화하여 확보해 둠으로써 수용가의 요구에 신속히 공급해 드립니다.

## FHB 구조도



NO	NAME	NO	NAME	NO	NAME	NO	NAME
1	CASING	6	MOTOR PINION	11	BEARING	16	PLUG
2	OUTPUT SHAFT	7	BEARING	12	MOTOR BRACKET	17	EYE PLATE
3	2'ND GEAR	8	BEARING	13	OIL SEAL		
4	2'ND PINION	9	BEARING	14	OIL SEAL		
5	1'ST GEAR	10	BEARING	15	AIR VENT		

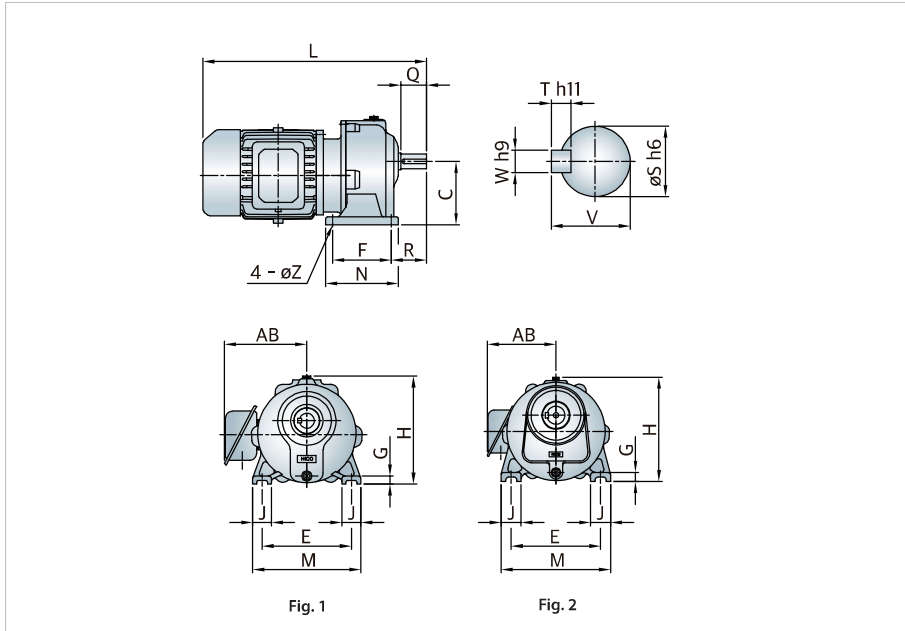
## 형식표시



## FN시리즈 GD<sup>2</sup>, O.H.L표

kW	Ratio	최대허용토크		모터축 환산GD <sup>2</sup>		출력축OHL	
		N·m	kgf·m	N·m <sup>2</sup>	kg·m <sup>2</sup>	N	kgf
0.75	1/5	28.6	2.9	0.139	0.0142	2,646	270
	1/10	57.3	5.8	0.139	0.0142	2,646	270
	1/15	85.9	8.8	0.139	0.0142	2,646	270
	1/20	114.5	11.7	0.139	0.0142	2,646	270
	1/30	171.8	17.5	0.138	0.0141	4,018	410
	1/40	229.1	23.4	0.138	0.0141	4,606	470
	1/45	257.7	26.3	0.138	0.0141	4,606	470
	1/50	286.4	29.2	0.138	0.0141	4,606	470
	1/60	343.6	35.1	0.138	0.0141	4,606	470
	1/75	429.5	43.8	0.138	0.0141	6,860	700
1/90	515.4	52.6	0.138	0.0141	6,860	700	
1.5	1/5	57.3	5.8	0.239	0.0244	3,430	350
	1/10	114.5	11.7	0.239	0.0244	3,430	350
	1/15	171.8	17.5	0.239	0.0244	3,430	350
	1/20	229.1	23.4	0.239	0.0244	3,430	350
	1/30	343.6	35.1	0.237	0.0242	5,880	600
	1/40	458.2	46.8	0.237	0.0242	7,840	800
	1/45	515.4	52.6	0.237	0.0242	7,840	800
	1/50	572.7	58.4	0.237	0.0242	7,840	800
	1/60	687.3	70.1	0.237	0.0242	7,840	800
	1/75	859.1	87.7	0.237	0.0242	10,290	1,050
1/90	1,030.9	105.2	0.237	0.0242	10,290	1,050	
2.2	1/5	84.0	8.6	0.556	0.0567	5,978	610
	1/10	168.0	17.1	0.556	0.0567	5,978	610
	1/15	252.0	25.7	0.556	0.0567	5,978	610
	1/20	336.0	34.3	0.556	0.0567	5,978	610
	1/30	504.0	51.4	0.551	0.0562	5,978	610
	1/40	672.0	68.6	0.551	0.0562	8,820	900
	1/45	756.0	77.1	0.551	0.0562	8,820	900
	1/50	840.0	85.7	0.551	0.0562	8,820	900
	1/60	1,008.0	102.9	0.551	0.0562	8,820	900
	1/75	1,260.0	128.6	0.551	0.0562	13,720	1,400
1/90	1,512.0	154.3	0.551	0.0562	13,720	1,400	
3.7	1/5	141.3	14.4	0.693	0.0706	6,370	650
	1/10	282.5	28.8	0.693	0.0706	6,370	650
	1/15	423.8	43.2	0.693	0.0706	6,370	650
	1/20	565.1	57.7	0.692	0.0706	6,370	650
	1/30	847.6	86.5	0.693	0.0707	9,310	950
	1/40	1,130.2	115.3	0.693	0.0707	13,720	1,400
	1/45	1,271.4	129.7	0.693	0.0707	13,720	1,400
	1/50	1,412.7	144.2	0.691	0.0705	13,720	1,400
	1/60	1,695.2	173.0	0.691	0.0705	13,720	1,400

FHB, FHC 외형도 및 외형치수

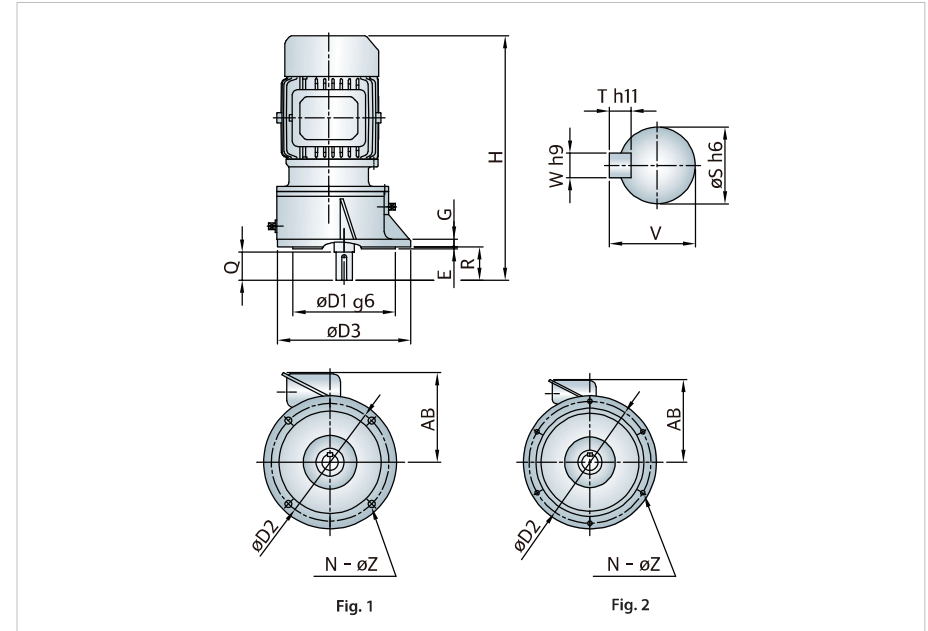


단위: mm

kW	Ratio	Fig	Dimension											Output Shaft					그리스량 (kg)	중량 (kg)	
			C	F	N	R	E	M	J	G	Z	H	L	AB	S	W	T	V			Q
0.4	10-20	1	115	120	145	50	155	190	35	15	12	200	405	165	25	8	7	28	35	0.25	27
	30		135	125	155	75	190	230	40	17	12	230	430	165	32	10	8	35	55	0.3	36
	40-60	2	135	150	190	65	190	235	45	17	14	230	455	165	32	10	8	35	55	0.5	40
70-90	165		175	220	80	215	265	50	20	19	260	485	165	42	12	8	45	65	0.8	55	
1.5	10-20	1	135	125	155	75	190	230	40	17	12	230	485	175	32	10	8	35	55	0.3	46
	30		160	130	170	75	215	260	45	20	14	265	485	175	38	12	8	41	58	0.3	53
	40-60	2	165	175	220	80	215	265	50	20	19	260	540	175	42	12	8	45	65	0.8	62
	70-90		180	185	235	95	240	295	55	23	19	285	560	175	48	14	9	51.5	75	1.2	74
2.2	10-30	1	160	130	170	75	215	260	45	20	14	265	510	200	38	12	8	41	58	0.3	69
	40-60		2	180	185	235	95	240	295	55	23	19	285	585	200	48	14	9	51.5	75	1.2
	70-90	200		220	270	100	270	330	60	27	22	315	615	200	55	16	10	59	85	1.8	115
3.7	10-20	1	180	160	210	90	240	295	55	23	19	305	545	210	48	14	9	51.5	80	0.6	89
	30		200	180	230	95	275	340	65	23	19	350	555	210	48	14	9	51.5	80	0.8	102
	40-60	2	200	220	270	100	270	330	60	27	22	315	615	210	55	16	10	59	85	1.8	117

주: 1. 극수는 4극기준임.  
2. HB TYPE 브레이크 부착시 외형치수 상기와 동일함.

FVB, FVC 외형도 및 외형치수

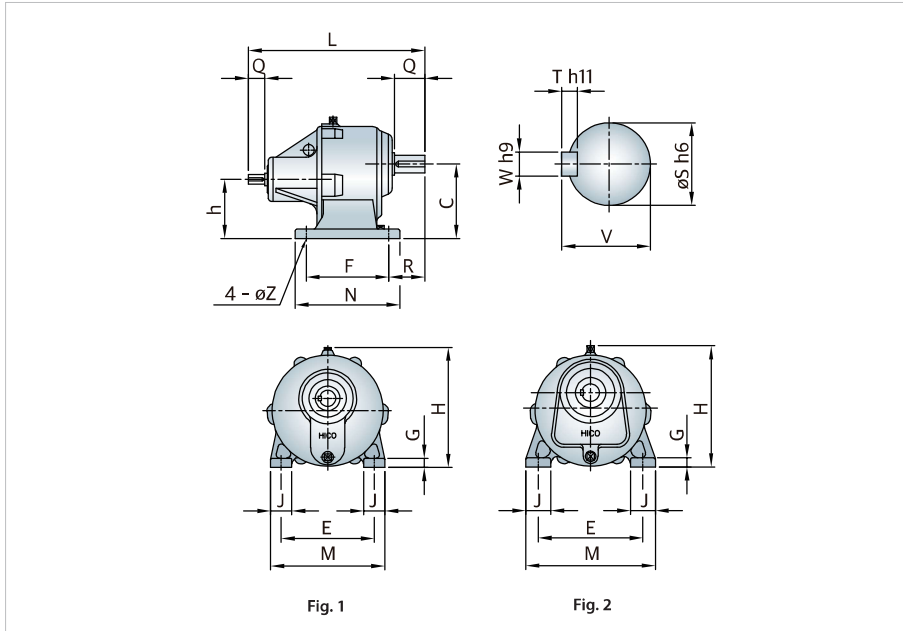


단위: mm

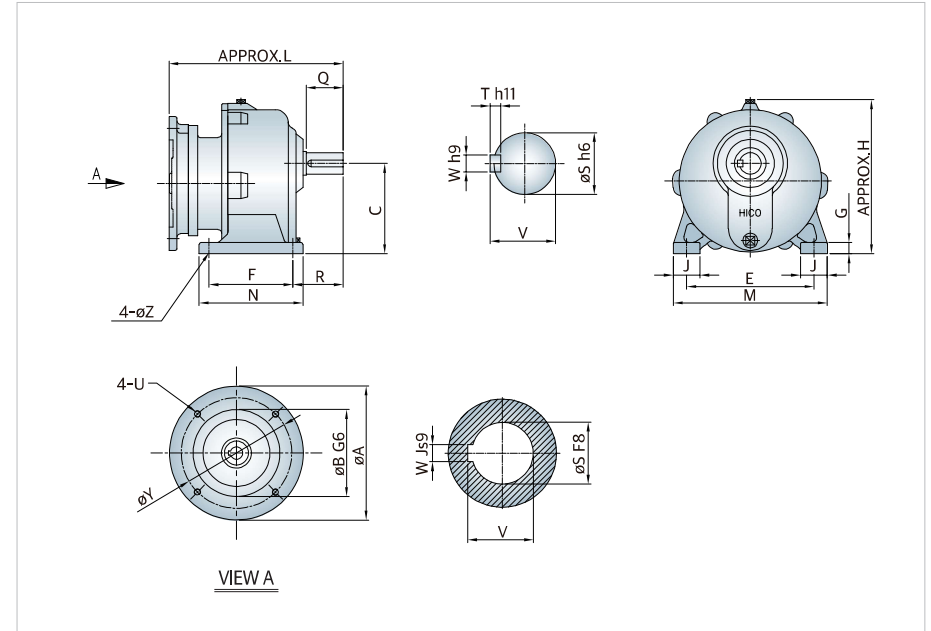
kW	Ratio	Fig	Dimension											Output Shaft					그리스량 (kg)	중량 (kg)
			D1	D2	D3	R	E	G	H	N	Z	AB	S	W	T	V	Q			
0.4	10-20	1	165	195	225	45	4	13	405	4	14	165	25	8	7	28	35	0.25	35	
	30		200	230	260	65	4	15	530	4	14	165	32	10	8	35	55	0.3	40	
	40-60		200	230	260	55	4	15	455	4	14	165	32	10	8	35	55	1	45	
	70-90		240	280	320	65	4	17	485	4	18	165	42	12	8	45	65	1.2	62	
1.5	10-20	1	200	230	260	65	4	15	485	4	14	175	32	10	8	35	55	0.3	50	
	30		230	270	305	70	4	17	485	4	18	175	38	12	8	41	58	0.3	58	
	40-60		240	280	320	65	4	17	540	4	18	175	42	12	8	45	65	1.2	69	
	70-90		2	280	320	355	75	5	19	560	6	14	175	48	14	9	51.5	75	1.2	76
2.2	10-30	1	230	270	305	70	4	17	510	4	18	200	38	12	8	41	58	0.3	74	
	40-60		2	280	320	355	75	5	19	585	6	14	200	48	14	9	51.5	75	1.2	98
	70-90	310		355	395	85	5	22	615	6	18	200	55	16	10	59	85	1.8	109	
	10-20	2	280	320	350	85	5	18	550	6	14	210	48	14	9	51.5	80	0.6	93	
30	320		360	393	85	5	18	555	6	14	210	48	14	9	51.5	80	0.8	113		
3.7	40-60	2	310	355	395	85	5	22	615	6	18	210	55	16	10	59	85	1.8	122	

주: 1. 극수는 4극기준임.  
2. HB TYPE 브레이크 부착시 외형치수 상기와 동일함.

## FCB, FCC 외형도 및 외형치수



## FHI 외형도 및 외형치수



단위: mm

kW	Ratio	Fig	Dimension													Input shaft					Output Shaft					그리스량 (kg)	중량 (kg)
			C	F	N	R	E	M	J	G	Z	H	L	h	S	W	T	V	Q	S	W	T	V	Q			
0.4	10-20	1	115	120	145	50	155	190	35	15	12	200	270	87	18	6	6	20.5	30	25	8	7	28	35	0.25	18	
	30		135	125	155	75	190	230	40	17	12	230	295	105	18	6	6	20.5	30	32	10	8	35	55	0.3	24	
	40-60	2	135	150	190	65	190	235	45	17	14	230	320	107	18	6	6	20.5	30	32	10	8	35	55	0.5	24	
70-90	165		175	220	80	215	265	50	20	19	260	352	126	18	6	6	20.5	30	42	12	8	45	65	0.8	38		
1.5	10-20	1	135	125	155	75	190	230	40	17	12	230	315	105	22	6	6	24.5	35	32	10	8	35	55	0.3	28	
	30		160	130	170	75	215	260	45	20	14	265	320	126	22	6	6	24.5	35	38	12	8	41	58	0.3	33	
	40-60	2	165	175	220	80	215	265	50	20	19	260	374	126	22	6	6	24.5	35	42	12	8	45	65	0.8	40	
	70-90		180	185	235	95	240	295	55	23	19	285	396	137	22	6	6	24.5	35	48	14	9	51.5	75	1.2	46	
2.2	10-30	1	160	130	170	75	215	260	45	20	14	265	340	126	25	8	7	28	40	38	12	8	41	58	0.3	35	
	40-60		2	180	185	235	95	240	295	55	23	19	285	416	137	25	8	7	28	40	48	14	9	51.5	75	1.2	47
	70-90	200		220	270	100	270	330	60	27	22	315	449	151.5	25	8	7	28	40	55	16	10	59	85	1.8	61	
3.7	10-20	1	180	160	210	90	240	295	55	23	19	305	375	135	28	8	7	31	45	48	14	9	51.5	80	0.6	49	
	30		200	180	230	95	275	340	65	23	19	351	382	154	28	8	7	31	45	48	14	9	51.5	80	0.8	56	
	40-60	2	200	220	270	100	270	330	60	27	22	315	447	151.5	28	8	7	31	45	55	16	10	59	85	1.8	62	

주: 1. 각수는 4각기준임.

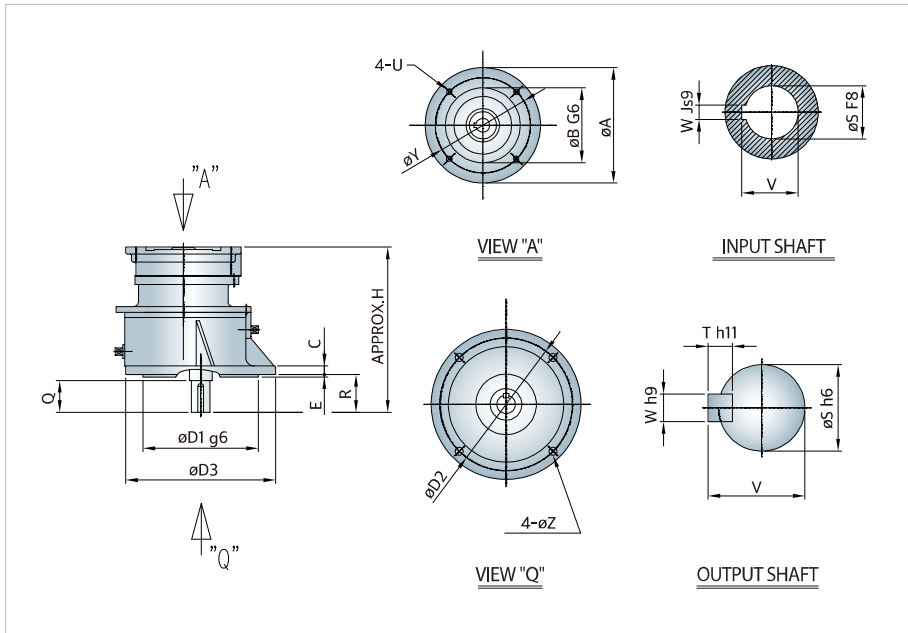
단위: mm

kW	Ratio	Dimension													Input flange				Input shaft					Output Shaft					그리스량 (kg)	중량 (kg)
		C	F	N	R	Z	L	E	M	J	G	H	Y	U	A	B	W	V	S	W	T	V	S	Q						
0.75	10-20	135	125	155	75	12	285	190	230	40	17	230	165	M10	200	130	6	21.8	19	10	8	35	32	55	0.3	24				
	30	135	125	155	75	12	260	190	230	40	17	230	165	M10	200	130	6	21.8	19	10	8	35	32	55	0.3	20				
	40-60	135	150	190	65	14	286	190	235	45	17	225	165	M10	200	130	6	21.8	19	10	8	35	32	55	0.5	24				
	70-90	165	175	220	80	19	317	215	265	50	20	260	165	M10	200	130	6	21.8	19	12	8	45	42	65	0.8	39				
1.5	10-20	135	125	155	75	12	285	190	230	40	17	230	165	M10	200	130	8	27.3	24	10	8	35	32	55	0.3	24				
	30	160	130	170	75	14	287	215	260	45	20	265	165	M10	200	130	8	27.3	24	12	8	41	38	58	0.3	31				
	40-60	165	175	220	80	19	339	215	265	50	20	260	165	M10	200	130	8	27.3	24	12	8	45	42	65	0.8	40				
	70-90	180	185	235	95	19	361	240	295	55	23	285	165	M10	200	130	8	27.3	24	14	9	51.5	48	75	1.2	52				
2.2	10-30	160	130	170	75	14	299	215	260	45	20	266	215	M12	250	180	8	31.3	28	12	8	41	38	58	0.3	32				
	40-60	180	185	235	95	19	374	240	295	55	23	285	215	M12	250	180	8	31.3	28	14	9	51.5	48	75	1.2	53				
	70-90	200	220	270	100	22	407	270	330	60	27	325	215	M12	250	180	8	31.3	28	16	10	59	55	85	1.8	78				
3.7	10-20	180	160	210	90	19	340	240	295	55	23	305	215	M12	250	180	8	31.3	28	14	9	51.5	48	80	0.6	49				
	30	200	180	230	95	19	347	275	340	65	27	351	215	M12	250	180	8	31.3	28	14	9	51.5	48	80	0.8	62				
	40-60	200	220	270	100	22	412	270	330	60	27	325	215	M12	250	180	8	31.3	28	16	10	59	55	85	1.8	77				

\* FN series 외부와 동일하여 기존제품 호환 가능

\* 전동기 외부 IEC 국제표준에 부합하여 전동기 maker 호환 가능

## FVI 외형도 및 외형치수



단위: mm

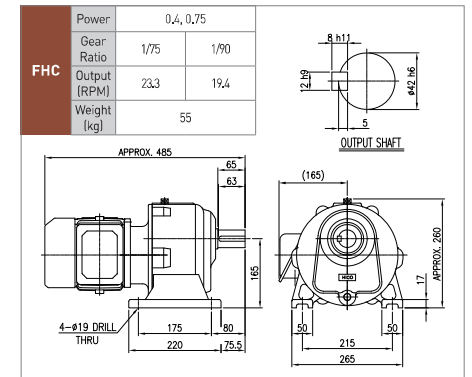
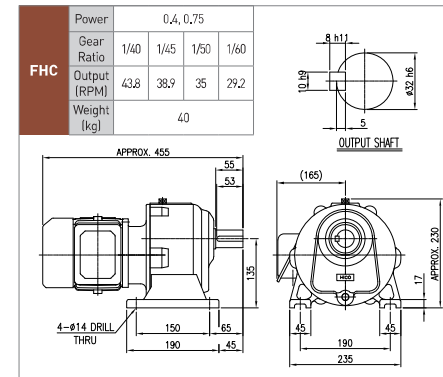
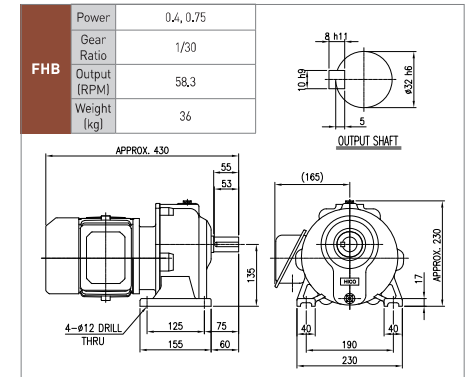
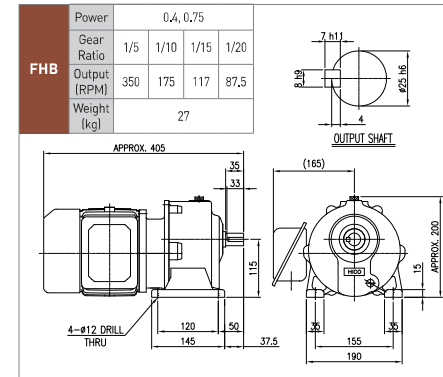
kW	Ratio	Dimension										Input flange		Input shaft					Output Shaft					그리스량 (kg)	중량 (kg)
		D1	D2	D3	R	E	C	H	N	Z	Y	U	A	B	W	V	S	W	T	V	S	Q			
0.75	10-20	200	230	260	65	4	15	295	4	14	165	M10	200	130	6	21.8	19	10	8	35	32	55	0.3	28	
	30	200	230	260	65	4	15	270	4	14	165	M10	200	130	6	21.8	19	10	8	35	32	55	0.3	24	
	40-60	200	230	260	55	4	15	295	4	14	165	M10	200	130	6	21.8	19	10	8	35	32	55	1	29	
	70-90	240	280	320	65	4	17	325	4	18	165	M10	200	130	6	21.8	19	12	8	45	42	65	1.2	46	
1.5	10-20	200	230	260	65	4	15	295	4	14	165	M10	200	130	8	27.3	24	10	8	35	32	55	0.3	28	
	30	230	270	305	70	4	17	295	4	18	165	M10	200	130	8	27.3	24	12	8	41	38	58	0.3	36	
	40-60	240	280	320	65	4	17	345	4	18	165	M10	200	130	8	27.3	24	12	8	45	42	65	1.2	47	
	70-90	280	320	355	75	5	19	370	6	14	165	M10	200	130	8	27.3	24	14	9	51.5	48	75	1.2	54	
2.2	10-30	230	270	305	70	4	17	305	6	18	215	M12	250	180	8	31.3	28	12	8	41	38	58	0.3	37	
	40-60	280	320	355	75	5	19	380	6	14	215	M12	250	180	8	31.3	28	14	9	51.5	48	75	1.2	61	
	70-90	310	355	395	85	5	22	415	6	18	215	M12	250	180	8	31.3	28	16	10	59	55	85	1.8	78	
	10-20	280	320	350	85	5	18	350	6	14	215	M12	250	180	8	31.3	28	14	9	51.5	48	80	0.6	53	
3.7	30	320	360	393	85	5	18	355	6	14	215	M12	250	180	8	31.3	28	14	9	51.5	48	80	0.8	73	
	40-60	310	355	395	85	5	22	420	6	18	215	M12	250	180	8	31.3	28	16	10	59	55	85	1.8	82	

\* FN series 허브와 동일하여 기존제품 호환 가능

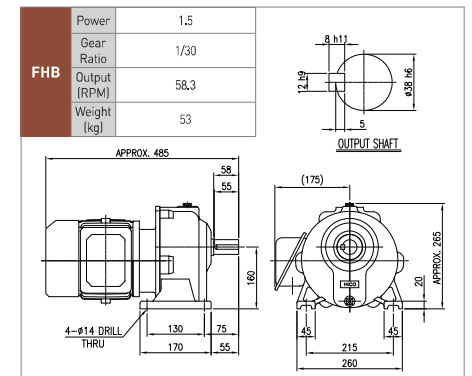
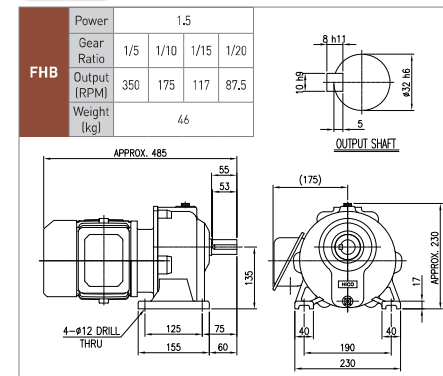
\* 전동기 허브 IEC 국제표준에 부합하여 전동기 maker 호환 가능

## FN 수평형

### 0.4, 0.75kW

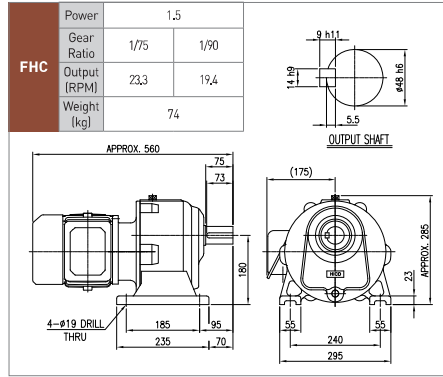
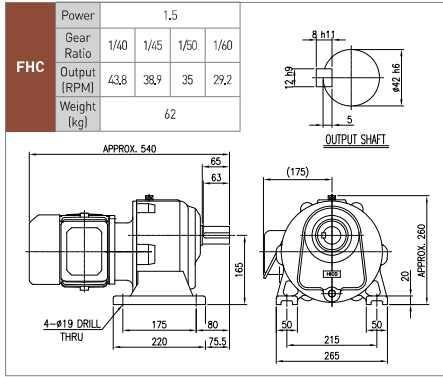


### 1.5kW



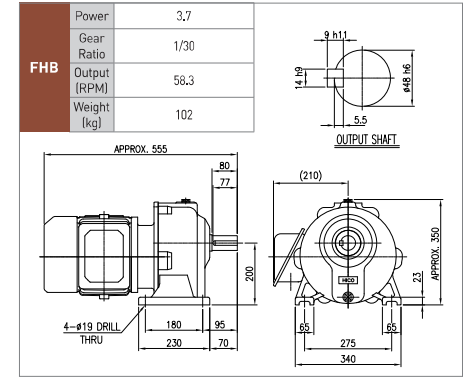
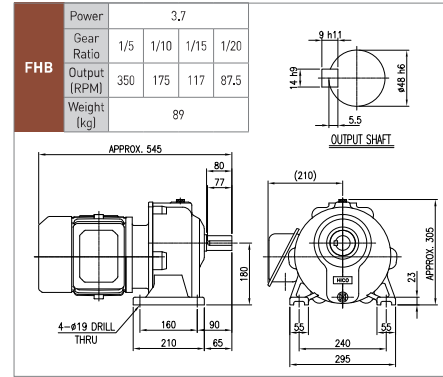
## FN 수평형

### 1.5kW

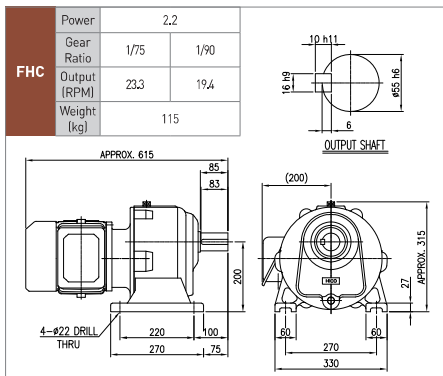
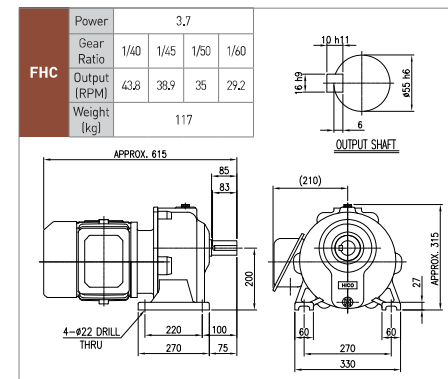
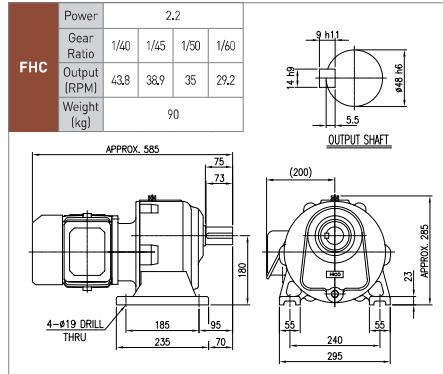
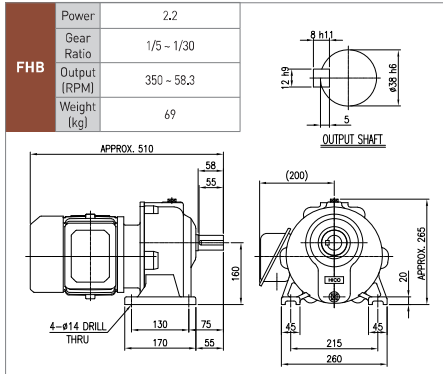


## FN 수평형

### 3.7kW

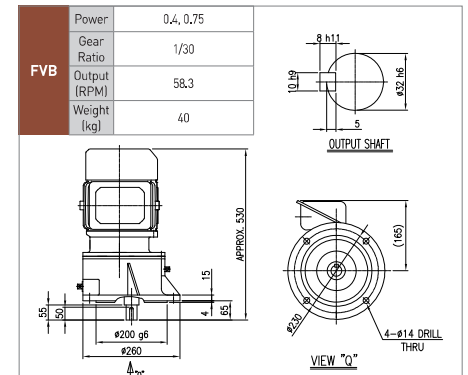
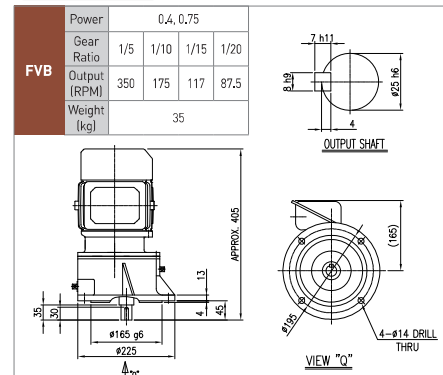


### 2.2kW



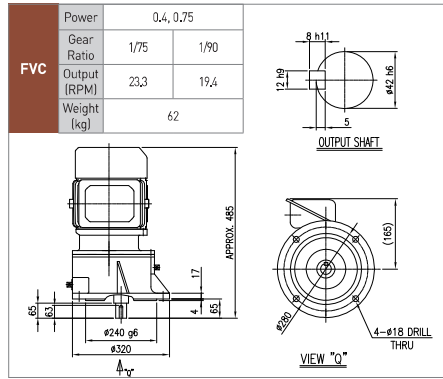
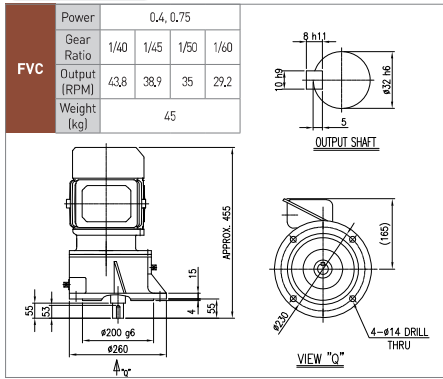
## FN 수직형

### 0.4, 0.75kW



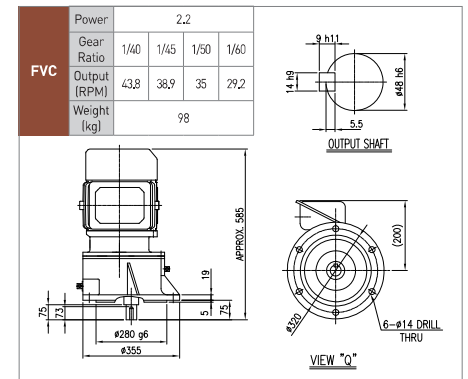
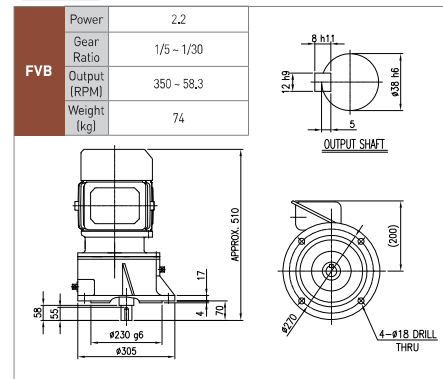
## FN 수직형

### 0.4, 0.75kW

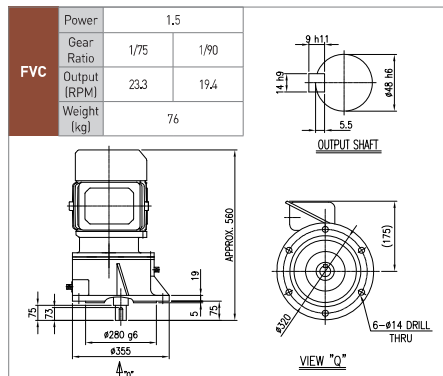
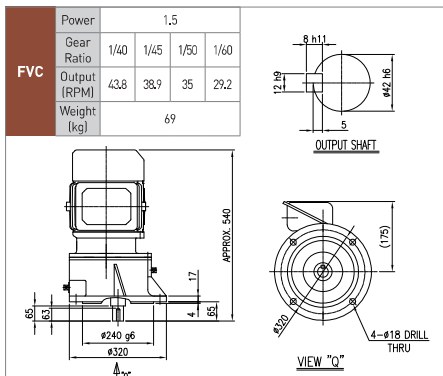
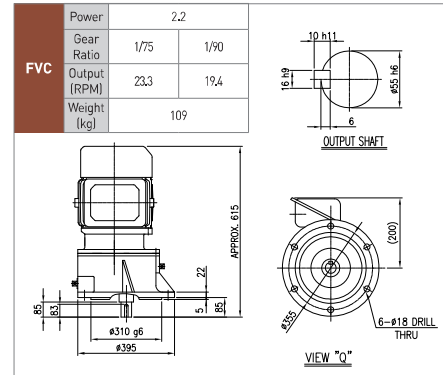
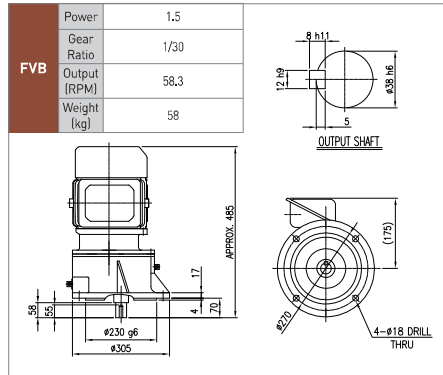
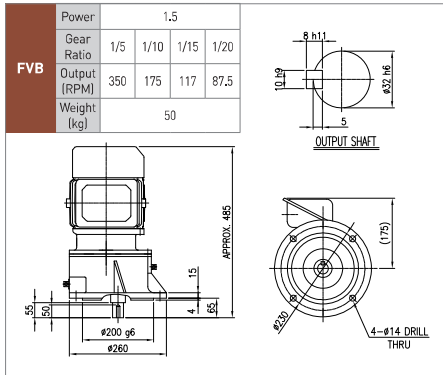


## FN 수직형

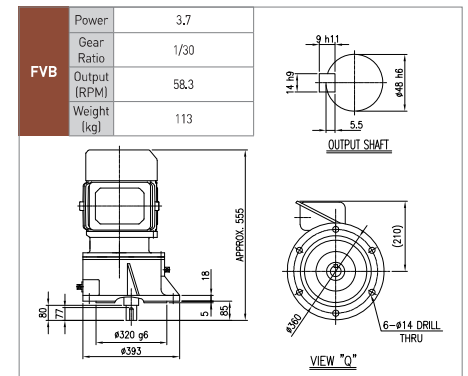
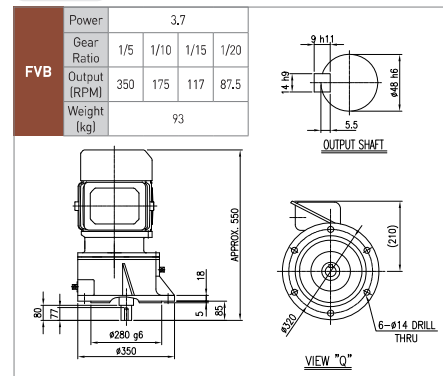
### 2.2kW



### 1.5kW

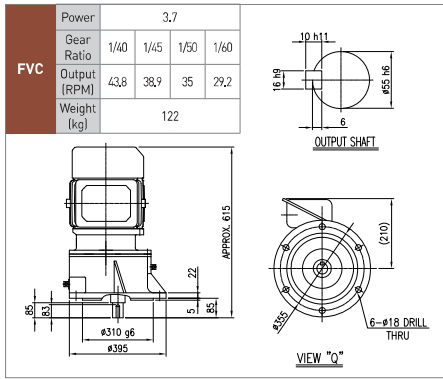


### 3.7kW



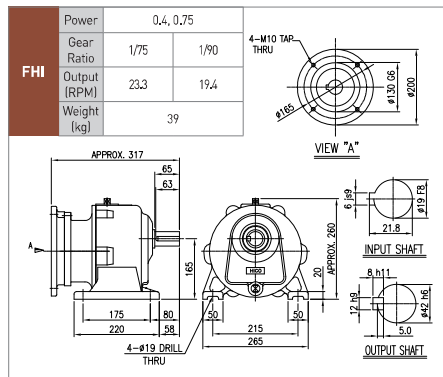
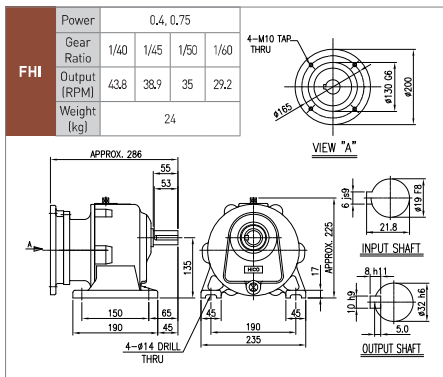
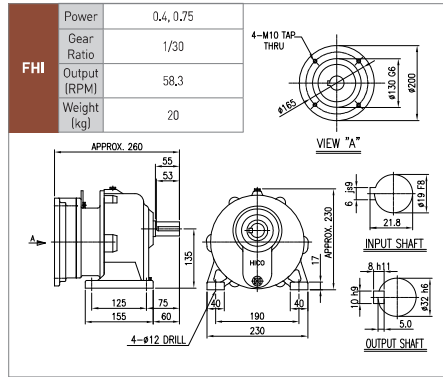
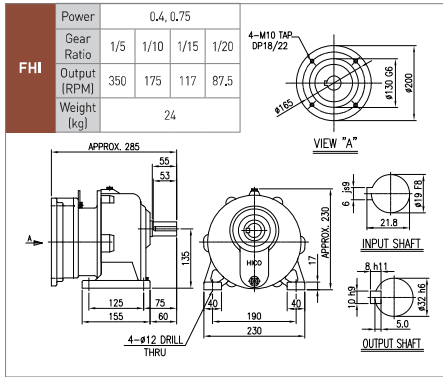
## FN 수직형

### 3.7kW



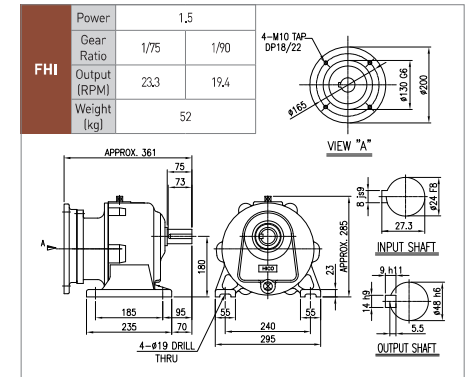
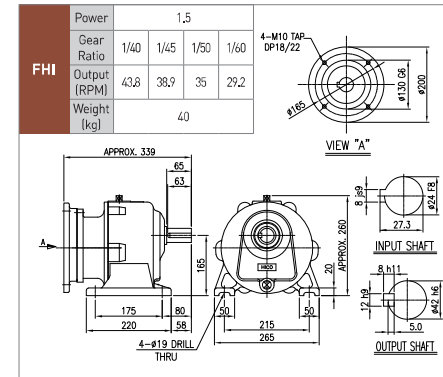
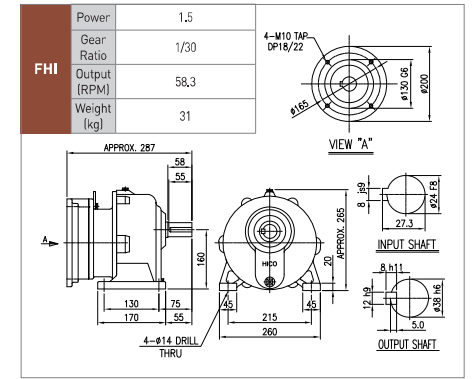
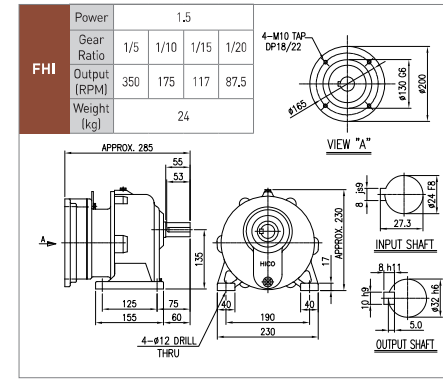
## FN IEC FLANGE(수평형)

### 0.4, 0.75kW

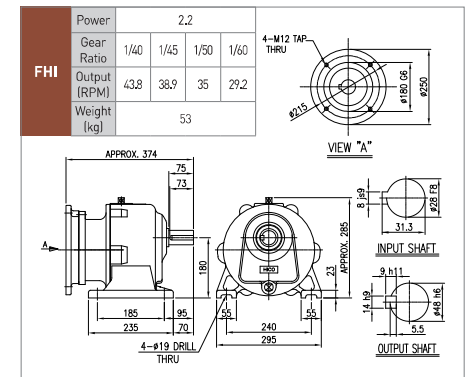
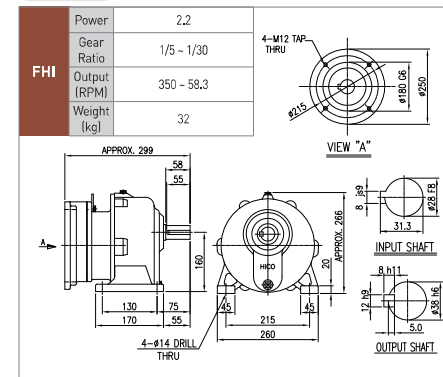


## FN IEC FLANGE(수평형)

### 1.5kW

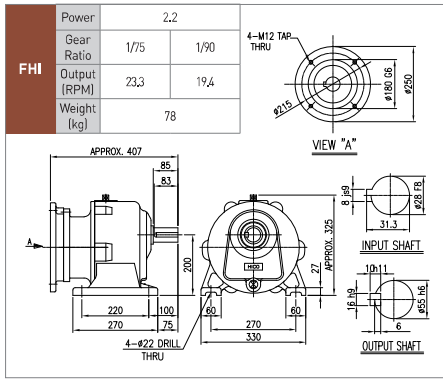


### 2.2kW

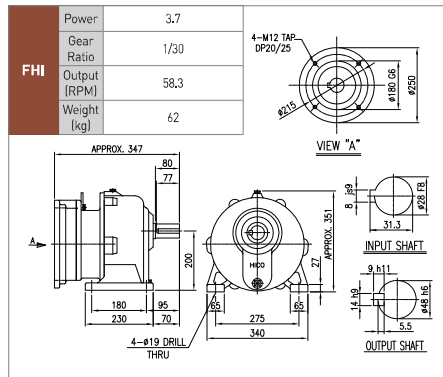
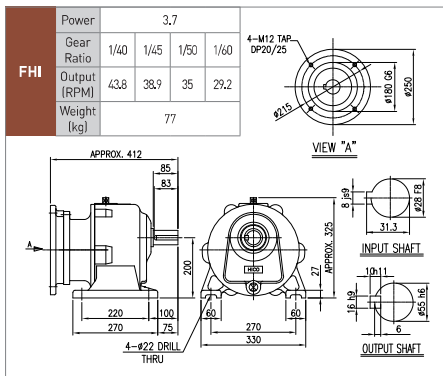
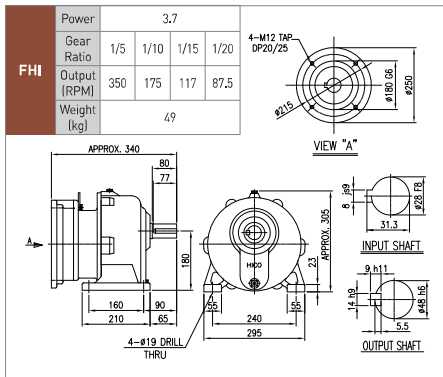


## FN IEC FLANGE(수평형)

2.2kW

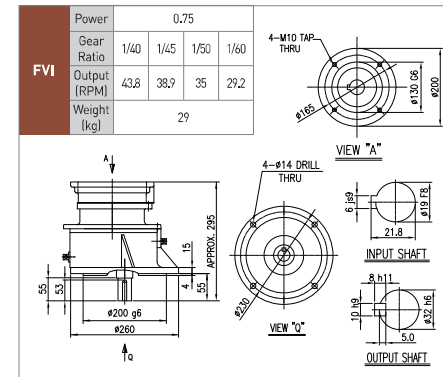
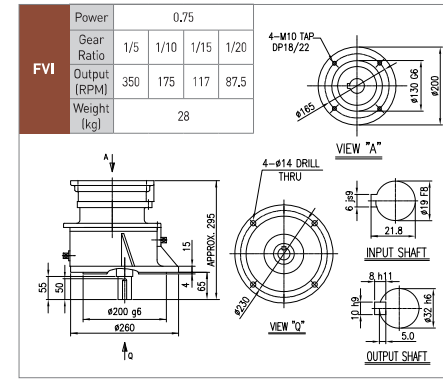


3.7kW

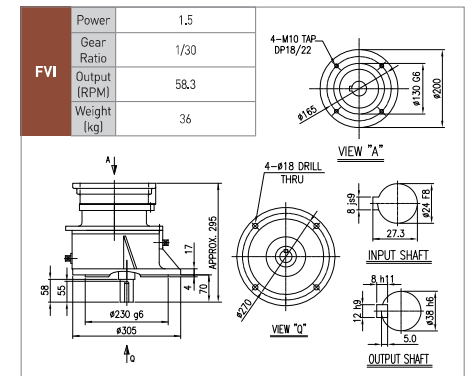
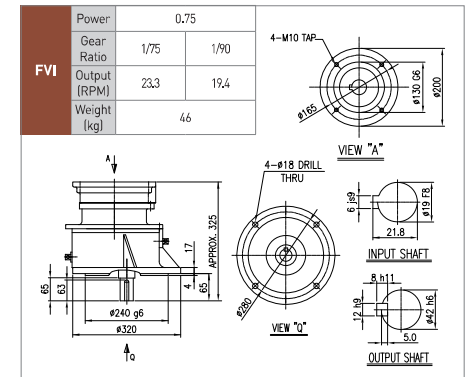
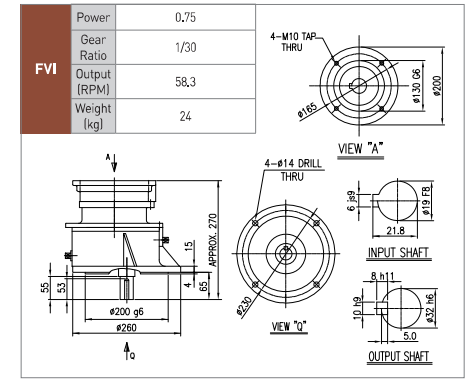
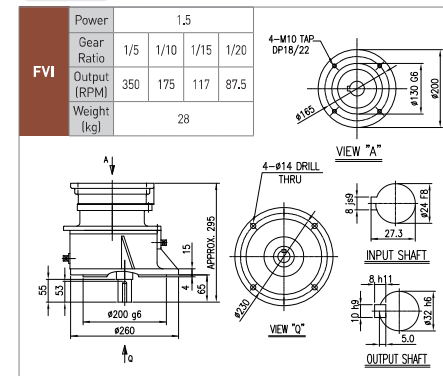


## FN IEC FLANGE(수직형)

0.75kW

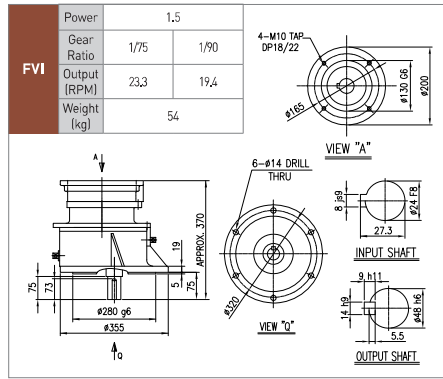
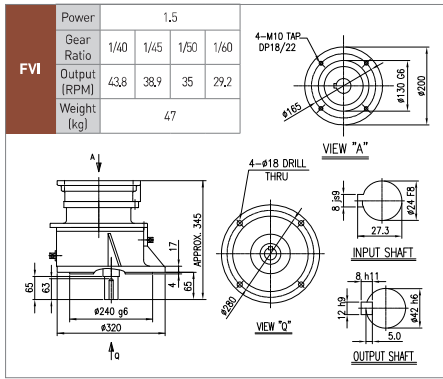


1.5kW

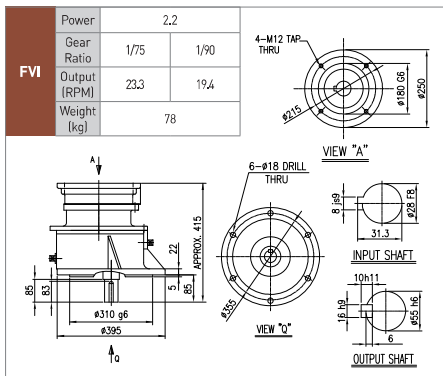
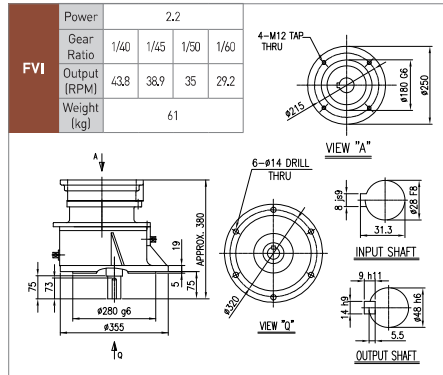
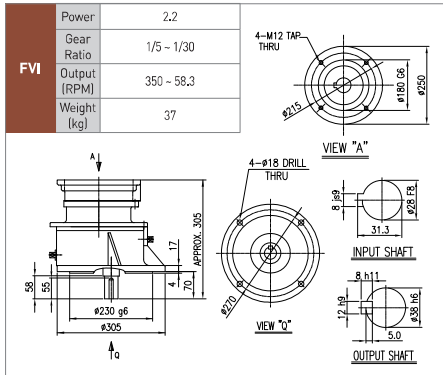


## FN IEC FLANGE(수직형)

1.5kW

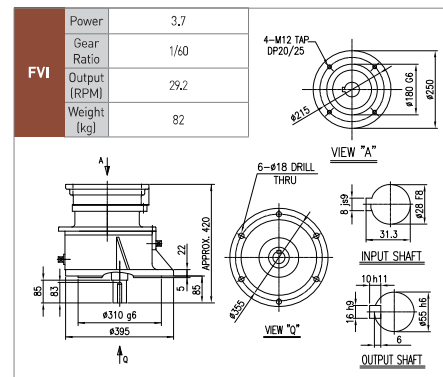
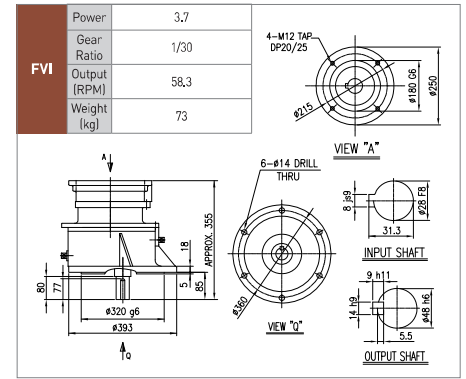
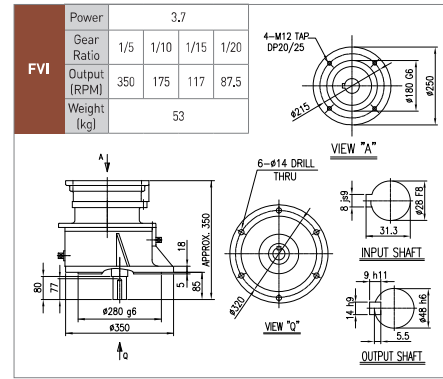


2.2kW



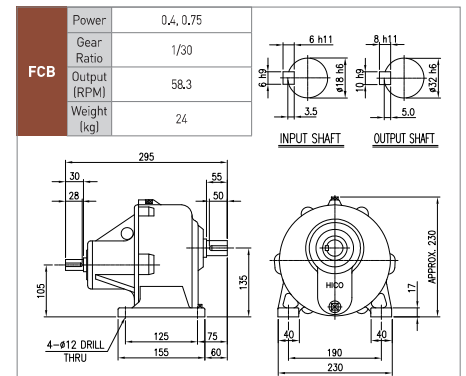
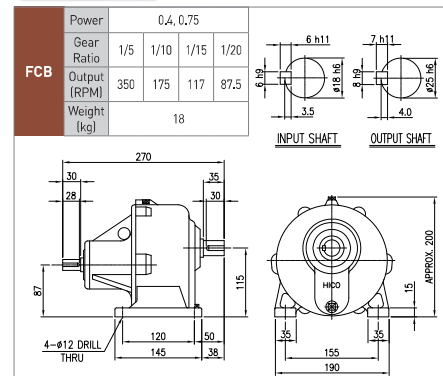
## FN IEC FLANGE(수직형)

3.7kW



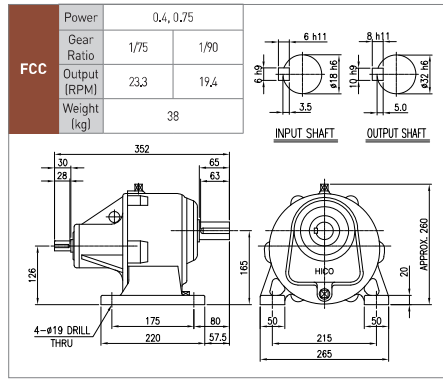
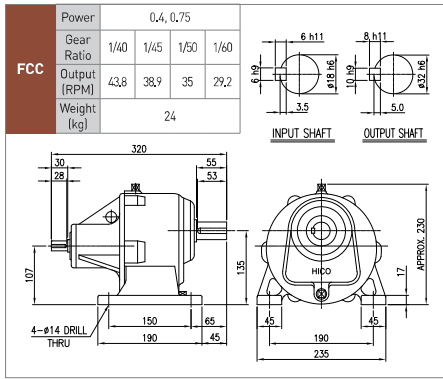
## FN 라인파워

0.4, 0.75kW



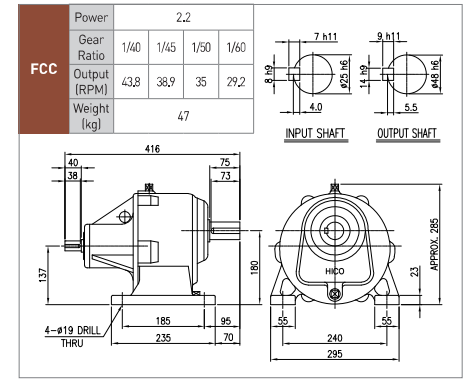
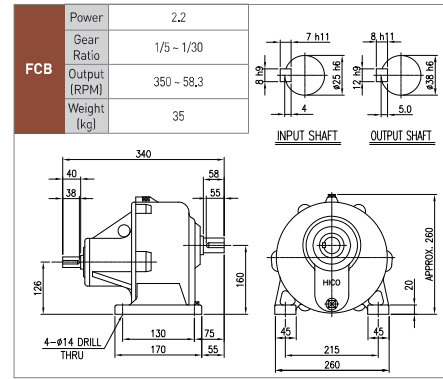
## FN 라인파워

### 0.4, 0.75kW

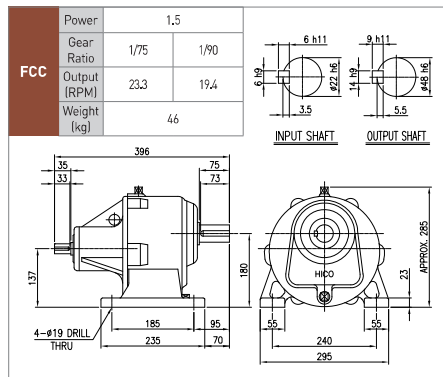
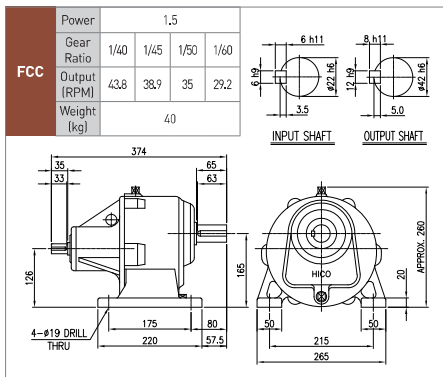
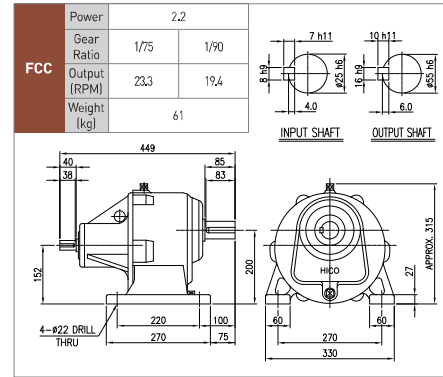
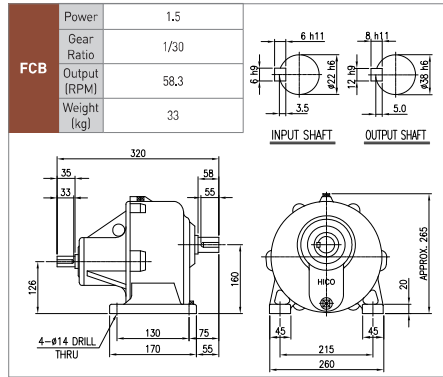
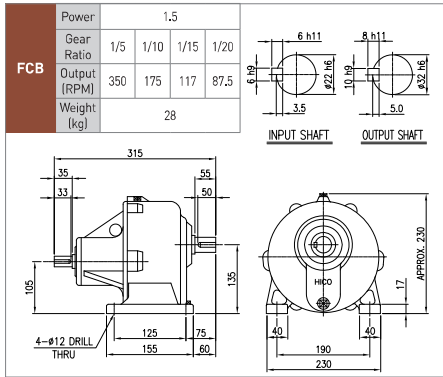


## FN 라인파워

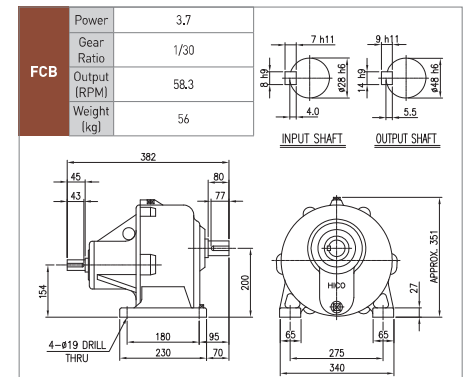
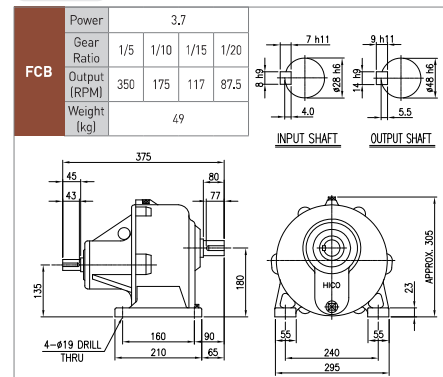
### 2.2kW



### 1.5kW



### 3.7kW



## FN 라인파워

3.7kW

