



K Series

중실축형

중공축형

중실축 FLANGE

중공축 FLANGE

K시리즈 특징

1. 고성능 강력한 프레임

기어 치형의 최적 설계 및 구조물의 구조해석과 시험평가로 강력한 프레임에 의해 저소음, 고효율 품질을 실현하였습니다.

2. 확실한 Seal 구조

오일의 누유를 최소화하기 위하여 고품질의 Seal 장치를 사용하였습니다.

3. 설치 Application의 다양화

중실, 중공축의 다양한 조합으로 고객의 니즈를 만족시킵니다.

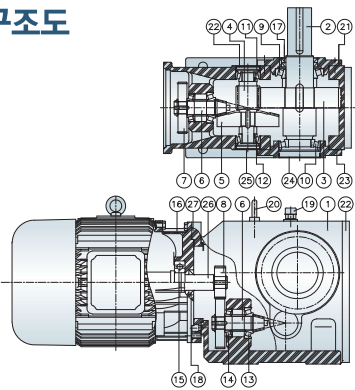
4. 부드러운 운전과 낮은 소음

진동을 흡수하고 기어 치합음을 낮출 수 있는 케이싱 및 기어 설계와 최상의 설비를 이용한 정밀도가 높은 기어를 제작함으로써 원활한 운전과 낮은 소음을 실현하였습니다.

5. 최적화 설계

다양한 설계 프로그램을 활용한 최적화 설계로 축단하중이 고려된 출력 베어링의 사용과 베어링 자체 수명을 증대하였습니다.

K 구조도



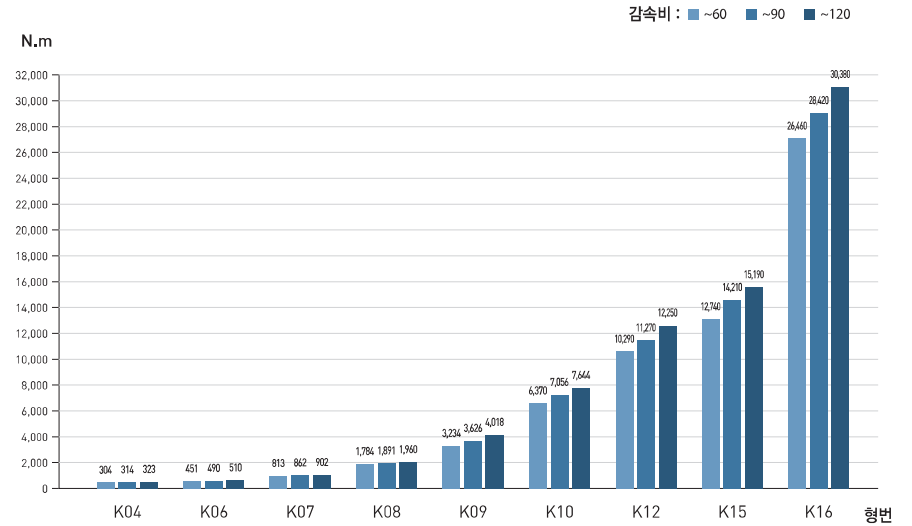
형식표시

K H H M 12

- 형번
- M: 모터 일체형
공란: Line Power
- H : 중실축형
- F : 중실축 Flange
- HH: 중공축형
- FH: 중공축 Flange
- 모델명

NO	NAME	NO	NAME	NO	NAME	NO	NAME
1	CASING	8	1'ST PINION	15	BEARING	22	CASING COVER
2	OUTPUT SHAFT	9	BEARING	16	MOTOR BRACKET	23	COVER
3	3'RD GEAR	10	BEARING	17	OIL SEAL	24	SEALING CAP
4	3'RD PINION	11	BEARING	18	OIL SEAL	25	SEALING CAP
5	BEVEL GEAR	12	BEARING	19	AIR VENT	26	MOTOR SHAFT
6	BEVEL PINION	13	BEARING	20	EYE BOLT	27	INPUT PLATE
7	1'ST GEAR	14	BEARING	21	SEALING CAP		

K 시리즈 허용 토크 및 O.H.L 표



Type	Ratio	최대 허용		출력속 허용	
		토크(N·m)	토크(kg·m)	O.H.L(N)	O.H.L(kg)
K04	30-59	304	31	4,116	420
	60-89	314	32	4,410	450
	90~	323	33	4,704	480
K06	30-59	451	46	6,468	660
	60-89	490	50	6,664	680
	90~	510	52	6,860	700
K07	30-59	813	83	8,820	900
	60-89	862	88	9,212	940
	90~	902	92	9,604	980
K08	30-59	1,784	182	13,034	1,330
	60-89	1,891	193	17,150	1,750
	90~	1,960	200	20,384	2,080
K09	30-59	3,234	330	19,894	2,030
	60-89	3,626	370	26,656	2,720
	90~	4,018	410	32,046	3,270
K10	30-59	6,370	650	24,108	2,460
	60-89	7,056	720	33,418	3,410
	90~	7,644	780	43,512	4,440
K12	30-59	10,290	1,050	37,240	3,800
	60-89	11,270	1,150	49,000	5,000
	90~	12,250	1,250	62,034	6,330
K15	30-59	12,740	1,300	44,100	4,500
	60-89	14,210	1,450	61,348	6,260
	90~	15,190	1,550	73,696	7,520
K16	30-59	26,950	2,750	76,440	7,800
	60-89	28,910	2,950	103,488	10,560
	90~	30,380	3,100	121,814	12,430

동력, 감속비에 따른 표준 형번 선정표

*4P 60Hz 기준

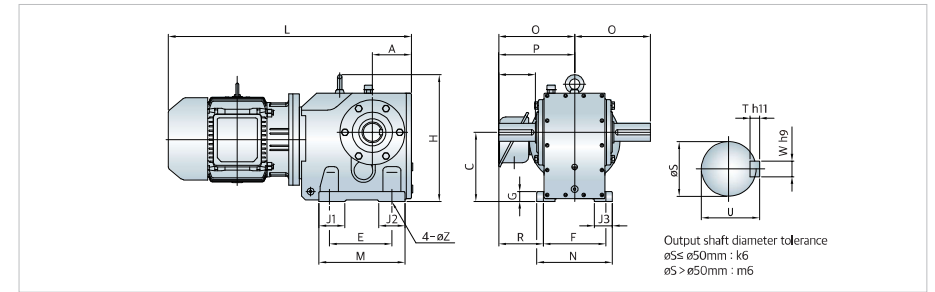
kW	Ratio	20	30	40	50	60	75	90	120
0.75	04	04	04	04	06	06	06	06	07
1.5	04	06	06	07	07	07	07	08	08
2.2	06	07	07	08	08	08	08	08	09
3.7	07	08	08	08	08	09	09	09	09
5.5	08	08	08	09	09	09	09	09	10
7.5	08	08	09	09	09	10	10	10	10
11	08	09	10	10	10	10	10	10	12
15	09	10	10	10	10	12	12	12	15
22	10	10	12	12	12	15	15	15	16
30	10	12	12	15	15	16	16	16	16
37	10	12	15	15	16	16	16	16	16
45	12	12	15	16	16	16	16	16	16
55	12	15	16	16	16	16	16	16	16
75	15	16	16	16	16	16	16	16	16
90	15	16	16	16	16	16	16	16	16

K시리즈 GD²

SIZE TYPE	FRAME	모터축 환산	
		GD ² (N·m ²)	GD ² (kg·m ²)
K04	80M	0.142	0.015
	90L	0.240	0.025
K06	80M	0.147	0.015
	90L	0.245	0.025
	100L	0.549	0.056
	112M	0.696	0.071
K07	80M	0.168	0.017
	90L	0.266	0.027
	100L	0.570	0.058
	112M	0.717	0.073
K08	132S	1.579	0.161
	90L	0.359	0.037
	100L	0.662	0.068
	112M	0.809	0.083
	132S	1.672	0.171
	132M	2.123	0.217
K09	160M	4.308	0.440
	112M	0.902	0.092
	132S	1.764	0.180
	132M	2.215	0.226
	160M	4.401	0.449
	160L	5.332	0.544
K10	180M	9.928	1.013

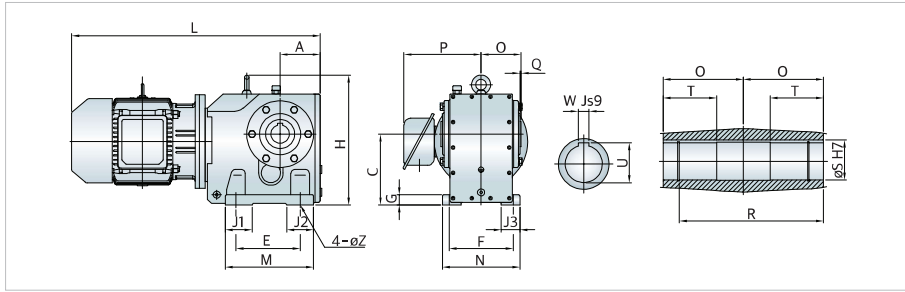
SIZE TYPE	FRAME	모터축 환산	
		GD ² (N·m ²)	GD ² (kg·m ²)
K10	132S	2.083	0.213
	132M	2.534	0.259
	160M	4.720	0.482
	160L	5.651	0.577
	180M	10.247	1.046
	180L	11.423	1.166
K12	200L	16.244	1.658
	160M	5.481	0.559
	160L	6.412	0.654
	180M	11.008	1.123
	180L	12.184	1.243
	200L	17.006	1.735
K15	225S	33.303	3.398
	160L	7.009	0.715
	180M	11.605	1.184
	180L	12.781	1.304
	200L	17.603	1.796
	225S	33.900	3.459
K16	250S	48.924	4.992
	180M	13.409	1.368
	180L	14.585	1.488
	200L	19.407	1.980
	225S	35.704	3.643
	250S	50.727	5.176
K16	250M	57.921	5.910

KHM 외형도 및 외형치수



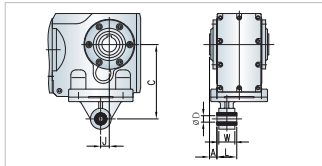
SIZE TYPE	kW	A	C	Z	E	F	G	H	J1	J2	O	L	M	N	P	Q	R	S	T	U	W	중량 (kg)
K04	0.75	71	112	4-ø11	130	16	45	-	35	135	500	172	165	60	30	33	46					46
	1.5				120	192			555	145	175	75	7	8	50							
K06	0.75	89	140	4-ø14	120	22	55		30	161	530	185	165	70	35	38	60					60
	1.5				140	261	45		585	175	175		64	87								
	2.2				140	261	45		615	200	210	91	8	10	92							
	3.7				140	261	45		610	210	210											
K07	0.75	107	173	4-ø18	150	25	70		40	196	560	230	165	90	45	48.5	93					93
	1.5				150	321	55		640	175	200		97									
	2.2				150	321	55		670	200	210	113.5	9	14	120							
	3.7				150	321	55		665	210	230				125							
	5.5				150	321	55		745	230	230				156							
	11				150	321	55		800	230	290	150	11	18	179							
K08	1.5	127	212	4-ø22	180	32	80		55	240	695	260	175	120	60	64	121					121
	2.2				180	388	55		725	200	210		125									
	3.7				180	388	55		720	210	230		148									
	5.5				180	388	55		760	230	230		179									
	7.5				180	388	55		800	230	290	150	11	18	184							
	11				180	388	55		830	230	290	150	11	18	247							
K09	3.7	150	265	4-ø26	240	38	100		75	291	790	330	210	140	70	74.5	234					234
	5.5				240	475	70		830	230	230		265									
	7.5				240	475	70		870	230	230		270									
	11				240	475	70		935	295	295	171	12	20	333							
	15				240	475	70		980	295	315				391							
	18.5, 22				240	475	70		1,025	290	315											
K10	5.5	188	315	4-ø33	280	42	110		95	347	910	390	230	170	90	95	344					344
	7.5				280	42	110		950	230	230		349									
	11				280	42	110		1,015	295	295		412									
	15				280	42	110		1,060	295	315		418									
	18.5, 22				280	42	110		1,105	315	315		470									
	30				280	42	110		1,145	340	370	212	14	25	485							
K12	37.45	213	375	4-ø39	270	560	90		115	418	1,205	340	315	212	14	25	552					552
	11				350	45	120		1,110	470	295	210	110	116	549							
	15				350	45	120		1,155	295	315		555									
	18.5, 22				350	45	120		1,200	315	315		607									
	30				350	45	120		1,240	315	370	253	16	28	622							
	37.45				350	45	120		1,300	370	395		689									
K15	55	280	450	4-ø39	380	50	130		130	470	1,320	400	450	260	18	32	709					709
	15				420	737	87.5		1,270	510	295	210	120	127	953							
	18.5, 22				420	737	87.5		1,315	315	315		1,005									
	30				420	737	87.5		1,355	315	370		1,020									
	37.45				420	737	87.5		1,415	370	370		1,117									
	55				420	737	87.5		1,435	395	450	260	18	32	1,172							
K16	75	315	500	6-ø33	480	830	70		555	555	1,510	495	450	315	22	40	1,232					1,232
	18.5, 22				540	50		1,435	690	315	250	160	169	1,361								
	30				540	50		1,475	315	370		1,428										
	37.45				540	50		1,535	370	395		1,515										
	55				540	50		1,550	395	450		1,580										
	75				540	50		1,625	566	450		1,640										
90	540	50		1,665	566	450																

KHHM 외형도 및 외형치수



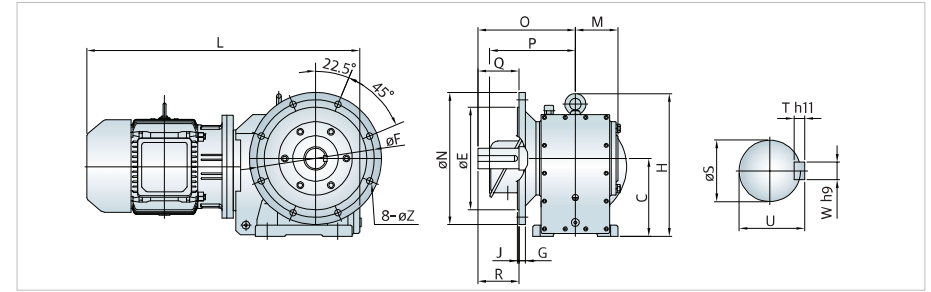
SIZE TYPE	kW	A	C	Z	E F	G H	J1 J3	J2	O	L	M N	P	R	S T	U W	중량 (kg)	
K04	0.75	71	112	4-ø11	130	16	45	35	135	500	172	165	130	35	38.3	51	
	1.5				120	192	-			555	145	175					10
K06	0.75	87	140	4-ø14	120	22	55	30	161	530	185	165	156	40	43.3	68	
	1.5				140	261	45			585	170	175					72
	2.2				140	261	45			615	200	210					95
	3.7				140	261	45			610	200	210					100
K07	0.75	107	173	4-ø18	150	25	70	40	196	560	230	165	183	50	53.8	87	
	1.5				150	321	55			640	200	200					114
	2.2				150	321	55			670	210	210					122
	3.7				150	321	55			665	210	210					122
K08	0.75	127	212	4-ø22	180	32	80	55	240	560	260	175	210	60	64.4	116	
	1.5				180	388	55			695	200	200					120
	2.2				180	388	55			725	210	210					143
	3.7				180	388	55			760	230	230					174
K09	0.75	150	265	4-ø26	240	38	100	75	291	790	330	210	270	70	74.9	229	
	1.5				240	475	70			830	230	230					260
	2.2				240	475	70			870	230	230					265
	3.7				240	475	70			870	230	230					265
K10	0.75	188	315	4-ø33	280	42	110	95	347	910	390	230	313	80	85.4	344	
	1.5				280	560	90			950	230	230					349
	2.2				280	560	90			1,015	295	295					412
	3.7				280	560	90			1,060	295	295					418
K12	0.75	213	375	4-ø39	330	670	90	115	418	1,110	470	295	373	140	28	923	
	1.5				330	670	90			1,155	295	295					975
	2.2				330	670	90			1,200	315	315					1,077
	3.7				330	670	90			1,240	315	315					1,142
K15	0.75	280	450	4-ø39	380	50	130	130	470	1,270	510	295	460	120	127.4	923	
	1.5				380	737	87.5			1,315	315	315					975
	2.2				380	737	87.5			1,355	315	315					990
	3.7				380	737	87.5			1,415	370	370					1,077
K16	0.75	315	500	6-ø33	420	737	87.5	70	305	1,435	495	315	520	130	137.4	1,281	
	1.5				420	830	70			1,475	315	315					1,333
	2.2				420	830	70			1,535	370	370					1,348
	3.7				420	830	70			1,550	395	395					1,435
5.5	420	830	70	1,625	450	450	1,500										
7.5	420	830	70	1,665	450	450	1,560										

TORQUE ARM



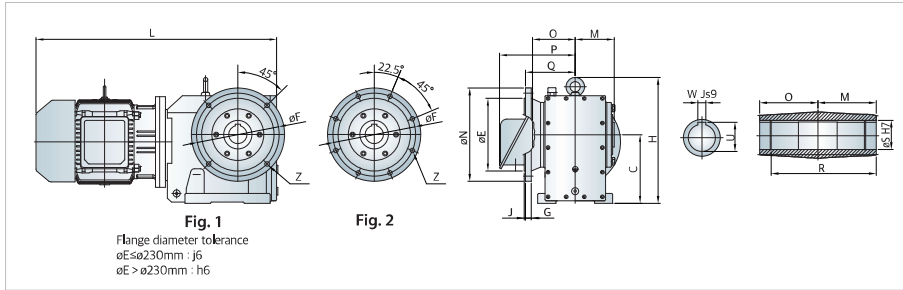
	C	J	D	A	L	W
K04	160	30	10.4	20	36	31
K06	200	45	16.4	25	60	54
K07	250	52.5	16.4	25	60	54
K08	300	60	25	30	80	72
K09	350	70	25	40	100	92
K10	450	74	25	45	100	92
K12	550	60	40	7	126	110
K15	700	50	40	2	126	110

KFM 외형도 및 외형치수



SIZE TYPE	kW	C	E F	G H	J	Z	O	L	M N	P	Q R	S T	U W	중량 (kg)						
K04	0.75	112	130	12	3.5	4-ø11	154	500	71	165	60	30	33	51						
	1.5														165	192	11	200	175	60
K06	0.75	140	180	15	4	4-ø14	183	530	89	165	70	35	38	61						
	1.5														585	175	70	35	38	65
	2.2														615	200	70	8	10	88
	3.7														610	210	70	8	10	93
K07	0.75	173	180	15	4	4-ø14	232	560	104	165	90	45	48.5	97						
	1.5														640	175	90	45	101	
	2.2														670	200	90	8	121	
	3.7														665	210	90	9	129	
K08	0.75	212	250	20	5	4-ø18	267	695	113	175	120	60	64	126						
	1.5														720	210	120	60	130	
	2.2														720	210	120	60	130	
	3.7														760	230	120	60	130	
K09	0.75	300	388	18	5	8-ø18	332	800	350	230	120	118	189	252						
	1.5														830	290	120	118	189	
	2.2														830	290	120	118	189	
	3.7														830	290	120	118	189	
K10	0.75	400	475	18	5	8-ø18	332	910	450	230	140	12	20	349						
	1.5														980	295	140	12	20	349
	2.2														980	295	140	12	20	349
	3.7														980	295	140	12	20	349
K12	0.75	280	450	25	5	8-ø18	466	1,110	224	295	210	110	116	569						
	1.5														1,155	295	210	110	116	575
	2.2														1,200	315	210	110	116	627
	3.7														1,240	315	210	110	116	642
5.5	1,300	370	210	16	28	709														
7.5	1,320	370	210	16	28	729														

KFHM 외형도 및 외형치수



SIZE TYPE	FRAME	FIG	C	E F	G H	J	Z	O	L	M N	P	Q R	S	U W	중량 (kg)	
K04	80M 90L	1	112	130 165	12 192	3.5	4-φ11	94	500 555	74 200	165 175	94.5 150	35	38.3 10	56 62	
K06	80M 90L 100L 112M		140	180 215	15 261	4	4-φ14	90	530 585 615 610	90 250	165 175 200 210	113 156	40	43.3 12	69 73 96 101	
	80M 90L 100L 112M 132S		173	180 215	15 321	4	4-φ14	105	585 640 670 665 745	105 250	165 175 200 210 230	142 183	50	53.8 14	91 95 115 123 154	
	90L 100L 112M 132S 132M 160M		212	250 300	20 388	5	4-φ18	120	695 725 720 760 800 860	120 350	175 200 210 230 230 290	147 210	60	64.4 18	121 125 148 179 184 247	
K09	112M 132S 132M 160M 160L 180M		2	265	350	22	5	8-φ18	150	790 830 870 935	150 450	210 230 230 295	192 270	70	74.9 20	239 270 275 338 344 396
	400				485	980 1,025				295 315		210 270				344 396
K10	132S 132M 160M 160L 180M 180L 200L		2	315	350	22	5	8-φ18	175	910 950 1,015 1,060	175 450	230 230 295 295	216 313	80	85.4 22	364 369 432 438 490 505 572
	400				560	1,105 1,145 1,205				315 315 370		490 505 572				
K12	160M 160L 180M 180L 200L 225S		2	375	450	25	5	8-φ18	205	1,110 1,155 1,200 1,240 1,300 1,320	205 550	295 295 315 315 370 395	255 373	100	106.4 28	569 575 627 642 709 729
	500				670	1,300 1,320				370 395		709 729				

Lubricant filling quantity(approx)

형번	Mounting Position						종류
	B3	V6	B8	V5	B6	V5	
K04	0.6	1.1	1.2	1.6	1.3	1.2	오일
K06	0.9	2.0	2.1	2.8	2.1	2.1	오일
K07	1.8	3.3	3.5	4.7	3.4	3.4	오일
K08	3.0	6.4	7.0	8.8	6.4	6.4	오일
K09	5.6	11.2	12.6	16.0	12.6	12.6	오일
K10	8	17	21	27	20	20	오일
K12	17	33	36	44	32	32	오일
K15	25	50	52	72	47	47	오일
K16	27	76	84	99	-	-	오일



GEARED MOTOR 유지보수 매뉴얼