



# H Series

---

수평형

수직형

라인파워

## H시리즈 특징

### 1. 고강도·견고성

출력축에 볼트로 고정된 커버가 없고 케이싱이 overhung load 또는 thrust load를 충분히 지탱하여 줍니다.

### 2. 부드러운 운전과 낮은 소음

진동을 흡수하고 기어 치합음을 낮출 수 있는 케이싱 및 기어 설계와 최상의 설비를 이용한 정밀도가 높은 기어를 제작함으로써 원활한 운전과 낮은 소음을 실현하였습니다.

### 3. 고정밀도

단 한 번의 기계 setting으로 모든 Bearing housing을 동시에 기계 가공함으로써 고정밀도를 실현하였습니다.

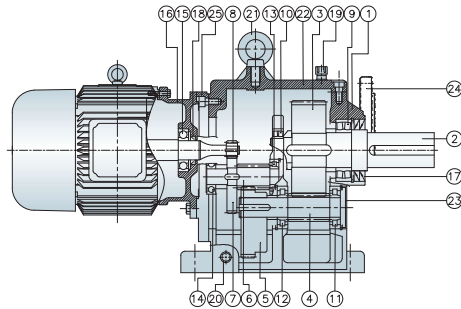
### 4. MOUNTING POSITIONS FREE

현장의 설치조건에 따라 자유자재로 설치가 가능하여 설치상의 제약이 적도록 되어 있습니다.

### 5. 낮은 유지보수비

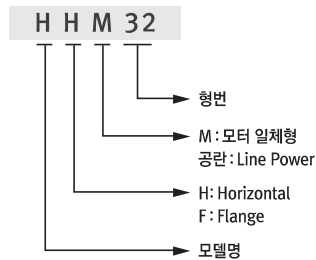
기존 제품보다 부품 수를 대폭 축소하여 running trouble이 현저히 줄었습니다.

## H 구조도



NO	NAME	NO	NAME	NO	NAME	NO	NAME
1	CASING	8	1'ST PINION	15	BEARING	22	CASING COVER
2	OUTPUT SHAFT	9	BEARING	16	MOTOR BRACKET	23	SEALING CAP
3	3'RD GEAR	10	BEARING	17	OIL SEAL	24	HFM TYPE FLANGE
4	3'RD PINION	11	BEARING	18	OIL SEAL	25	INPUT FLANGE
5	2'ND GEAR	12	BEARING	19	AIR VENT	26	MOTOR SHAFT
6	2'ND PINION	13	BEARING	20	PLUG		
7	1'ST GEAR	14	BEARING	21	EYE BOLT		

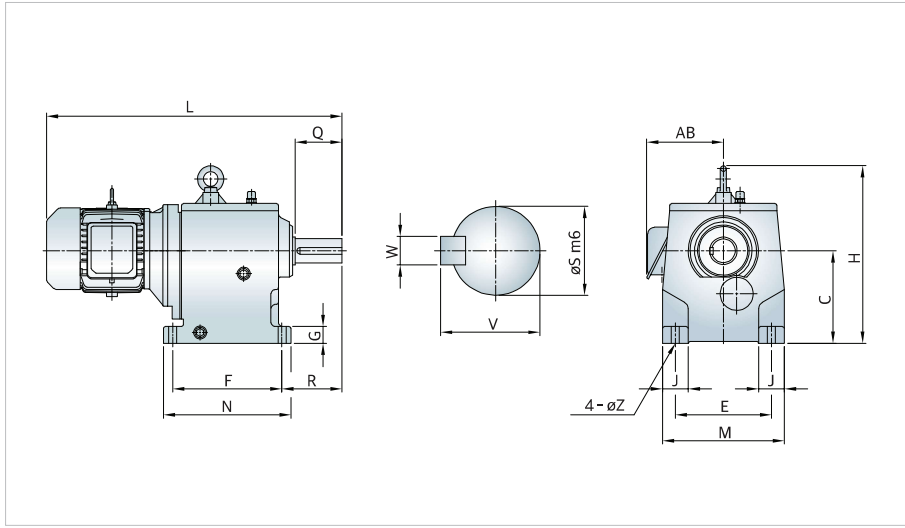
## 형식표시



## H시리즈 GD<sup>2</sup>, O.H.L표

Type	kW	Ratio	최대허용토크		모터축 환산GD <sup>2</sup>		출력축OHL	
			N·m	kgf·m	N·m <sup>2</sup>	kg·m <sup>2</sup>	N	kgf
HHM25	3.7	1/80	2,263	231	0.696	0.071	17,287	1,764
	3.7	1/90	2,545	260	0.696	0.071	17,287	1,764
	3.7	1/100	2,828	289	0.696	0.071	17,287	1,764
	3.7	1/120	3,394	346	0.696	0.071	17,287	1,764
	5.5	1/40	1,682	172	1.588	0.162	17,287	1,764
	5.5	1/45	1,892	193	1.588	0.162	17,287	1,764
	5.5	1/50	2,102	214	1.588	0.162	17,287	1,764
	5.5	1/60	2,523	257	1.578	0.161	17,287	1,764
	7.5	1/40	2,293	234	2.038	0.208	17,287	1,764
	7.5	1/45	2,580	263	2.038	0.208	17,287	1,764
7.5	1/50	2,866	292	2.038	0.208	17,287	1,764	
HHM28	5.5	1/80	3,363	343	1.568	0.160	24,255	2,475
	5.5	1/90	3,784	386	1.568	0.160	24,255	2,475
	5.5	1/100	4,204	429	1.568	0.160	24,255	2,475
	5.5	1/120	5,045	515	1.568	0.160	24,255	2,475
	7.5	1/60	3,440	351	2.058	0.210	24,255	2,475
	11	1/40	3,363	343	4.253	0.434	24,255	2,475
	11	1/45	3,784	386	4.253	0.434	24,255	2,475
	11	1/50	4,204	429	4.243	0.433	24,255	2,475
	11	1/60	5,045	515	4.243	0.433	24,255	2,475
	15	1/40	4,586	468	5.184	0.529	24,255	2,475
HHM32	7.5	1/80	4,586	468	2.038	0.208	42,248	4,311
	7.5	1/90	5,160	527	2.038	0.208	42,248	4,311
	7.5	1/100	5,733	585	2.038	0.208	42,248	4,311
	7.5	1/120	6,880	702	2.038	0.208	42,248	4,311
	11	1/80	6,727	686	4.224	0.431	42,248	4,311
	15	1/40	4,586	468	5.243	0.535	42,248	4,311
	15	1/45	5,160	527	5.233	0.534	42,248	4,311
	15	1/50	5,733	585	5.223	0.533	42,248	4,311
	15	1/60	6,880	702	5.214	0.532	42,248	4,311
	18.5	1/40	5,657	577	9.848	1.005	42,248	4,311
HHM39	18.5	1/45	6,364	649	9.839	1.004	42,248	4,311
	18.5	1/50	7,071	721	9.830	1.003	42,248	4,311
	22	1/40	6,727	686	9.848	1.005	42,248	4,311
	11	1/90	7,568	772	4.302	0.439	62,122	6,339
	11	1/100	8,408	858	4.302	0.439	62,122	6,339
	11	1/120	10,090	1,030	4.292	0.438	62,122	6,339
	15	1/80	9,173	936	5.243	0.535	62,122	6,339
	15	1/90	10,319	1,053	5.233	0.534	62,122	6,339
	15	1/100	11,466	1,170	5.233	0.534	62,122	6,339
	15	1/120	13,760	1,404	5.233	0.534	62,122	6,339
HHM39	18.5	1/60	8,485	866	10.042	1.025	62,122	6,339
	18.5	1/80	11,313	1,154	9.840	1.004	62,122	6,339
	22	1/45	7,568	772	10.096	1.030	62,122	6,339
	22	1/50	8,408	858	10.073	1.028	62,122	6,339
	22	1/60	10,090	1,030	10.042	1.025	62,122	6,339
	30	1/40	9,173	936	11.296	1.153	62,122	6,339
	30	1/45	10,319	1,053	11.271	1.150	62,122	6,339
	30	1/50	11,466	1,170	11.249	1.148	62,122	6,339
	37	1/40	11,313	1,154	14.393	1.469	62,122	6,339

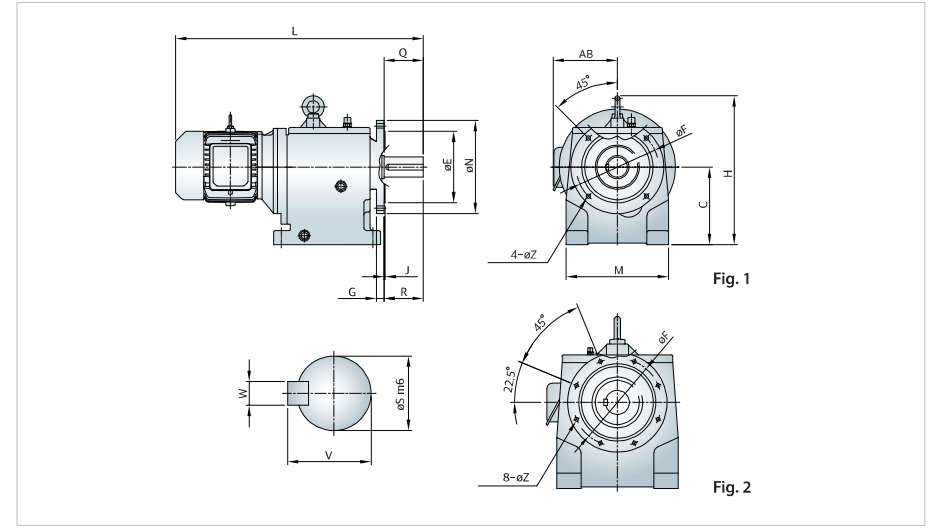
## HHM 외형도 및 외형치수



단위: mm

Type	kW	Dimension											Output Shaft				중량 (kg)	
		C	F	N	R	E	M	J	G	Z	H	L	AB	S	V	W		Q
HHM25	3.7	250	295	345	163	260	330	70	45	22	485	805	210	65	69	18	127	188
	5.5											850	230					205
	7.5											865	230					215
	11											916	280					245
	15											960	280					270
HHM28	5.5	280	330	385	179	325	400	70	55	26	560	890	230	76	81	22	140	300
	7.5											930	230					310
	11											1,010	290					340
	15											1,050	290					365
	HHM32											7.5	315					400
11		1,090	290	450														
15		1,135	290	475														
18.5, 22		1,195	315	552														
HHM39		11	390	450	540	271	440	550	110	70	33	790		1,185	290	110	116	
	15	1,230											290	670				
	18.5, 22	1,290											315	752				
	30	1,330											315	767				
	37	1,390											370	835				

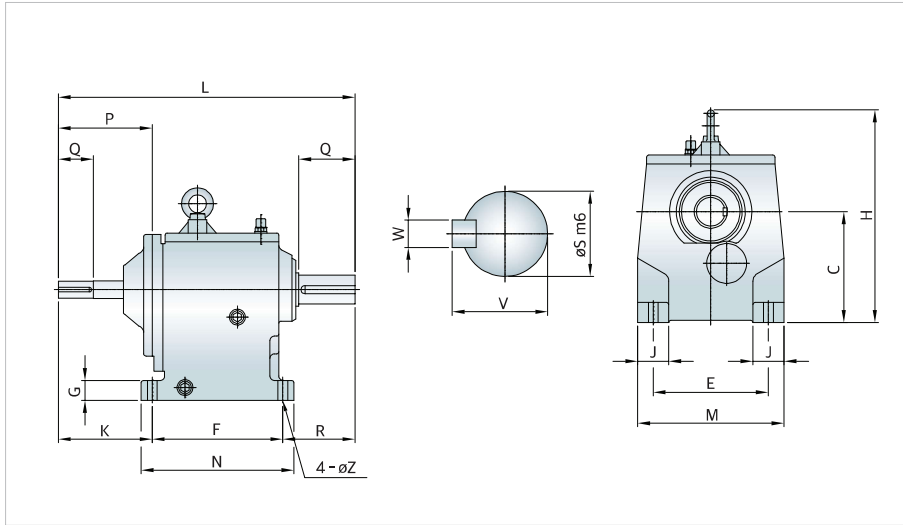
## HFM 외형도 및 외형치수



단위: mm

Type	kW	Fig	Dimension											Output Shaft				중량 (kg)	
			C	F	N	R	E	M	J	G	Z	H	L	AB	S	V	W		Q
HFM25	3.7	1	250	265	300	127	230	330	4	24	14	485	805	210	65	69	18	127	188
	5.5												850	230					205
	7.5												885	230					215
	11												960	280					245
	15												1,004	280					270
HFM28	5.5	1	280	300	350	140	250	400	5	24	18	560	890	230	76	81	22	140	300
	7.5												930	230					310
	11												1,010	290					340
	15												1,050	290					365
	HFM32												7.5	1					315
11		1,090	290	450															
15		1,135	290	475															
18.5, 22		1,195	315	552															
HFM39		11	2	390	400	450	216	350	550	5	26	18	790		1,185	290	110	116	
	15	1,230												290	670				
	18.5, 22	1,290												315	752				
	30	1,330												315	767				
	37	1,390												370	835				

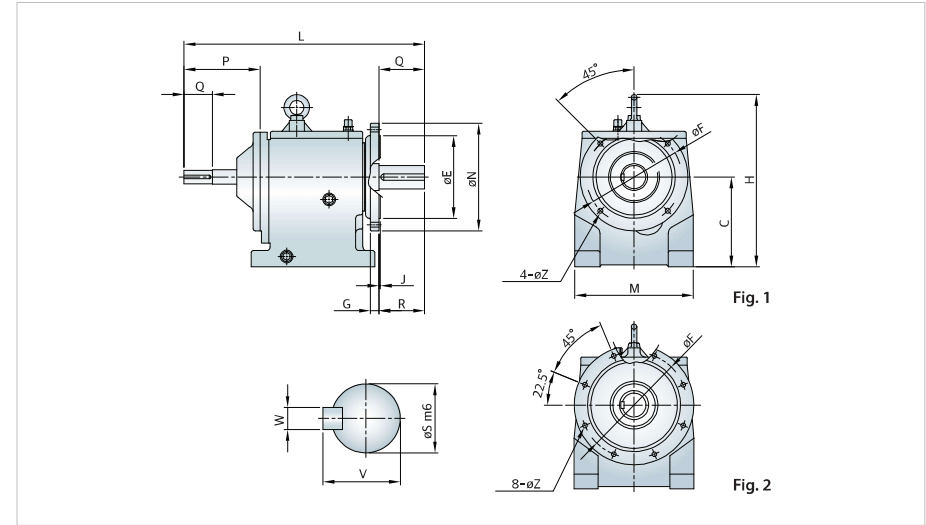
## HH 외형도 및 외형치수



단위: mm

Type	Dimension													Output Shaft				Input Shaft				중량 (kg)
	C	F	N	R	K	E	M	J	G	Z	H	L	P	S	V	W	Q	S	V	W	Q	
HH25	250	295	345	163	212	260	330	70	45	22	490	670	212	65	69	18	127	38	41	10	79	155
HH28	280	330	385	179	311	325	400	70	55	26	551	820	289	76	81	22	140	42	45	12	110	250
HH32	315	400	472	216	285	360	450	90	55	33	630	901	289	90	95	25	172	42	45	12	110	360
HH39	390	450	540	271	276	440	550	110	70	33	790	997	289	110	116	28	216	42	45	12	110	540

## HF 외형도 및 외형치수



단위: mm

Type	Fig	Dimension													Output Shaft				Input Shaft				중량 (kg)
		C	F	N	R	E	M	J	G	Z	H	L	P	S	V	W	Q	S	V	W	Q		
HF25	1	250	265	300	127	230	330	4	24	14	480	670	212	65	69	18	127	38	41	10	79	155	
HF28		280	300	350	140	250	400	5	24	18	551	820	289	76	81	22	140	42	45	12	110	250	
HF32	2	315	400	450	172	350	450	5	26	18	630	910	289	90	95	25	172	42	45	12	110	360	
HF39		390	400	450	216	350	550	5	26	18	790	997	289	110	116	28	216	42	45	12	110	540	

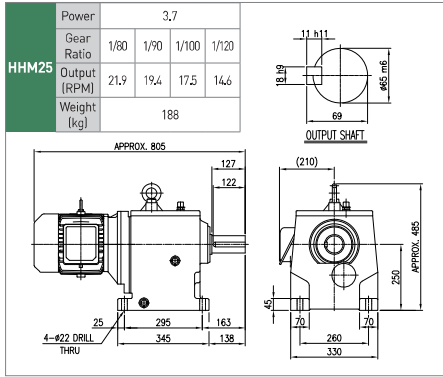
## Lubricant filling quantity(approx)

단위: L

Type	Mounting Position											
	B3	B6	B7	B8	B5	B5I	B5II	B5III	V1	V3	V5	V6
H25	10	13	13	11	11	12	14	14	18	14	16	15
H28	14	20	20	18	14	18	20	20	28	23	27	20
H32	22	33	33	26	23	27	34	34	40	34	37	31
H39	55	67	67	55	55	59	67	67	99	78	97	71

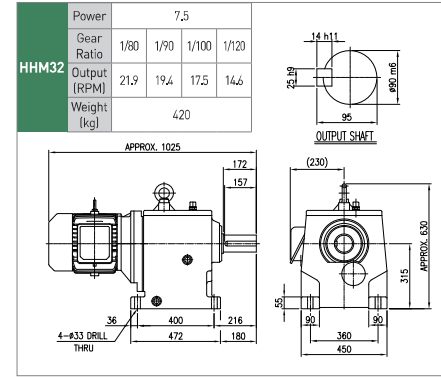
## H 수평형

### 3.7kW

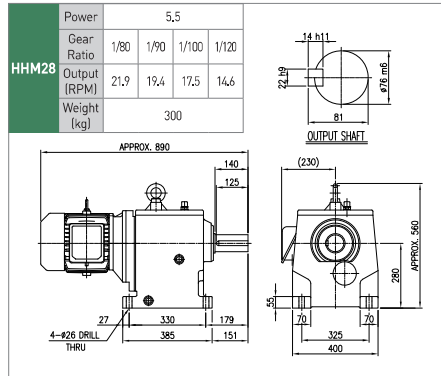
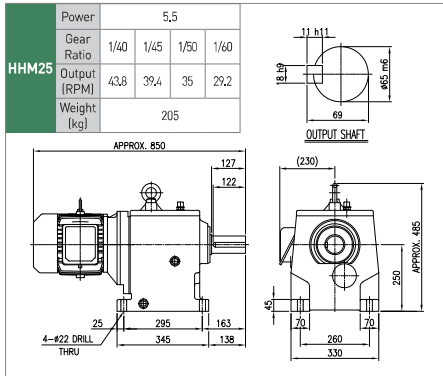


## H 수평형

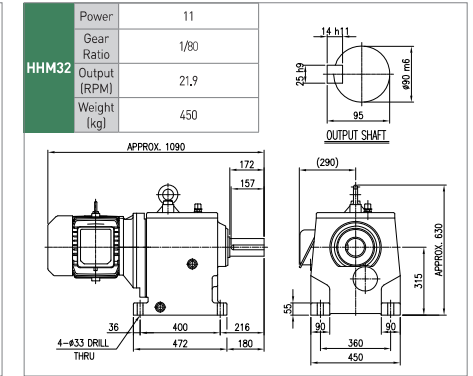
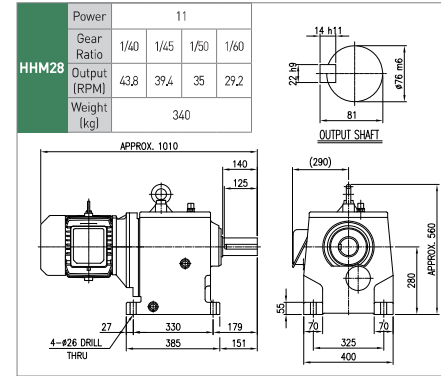
### 7.5kW



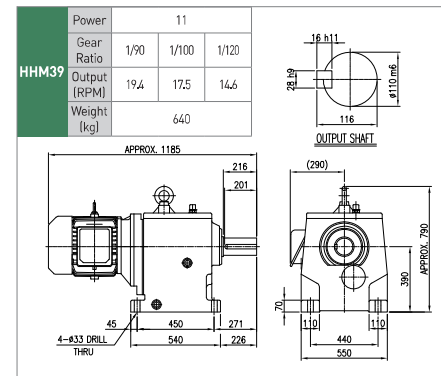
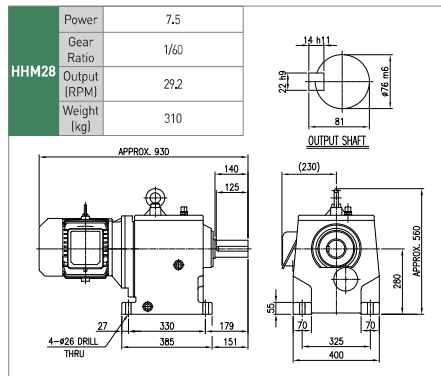
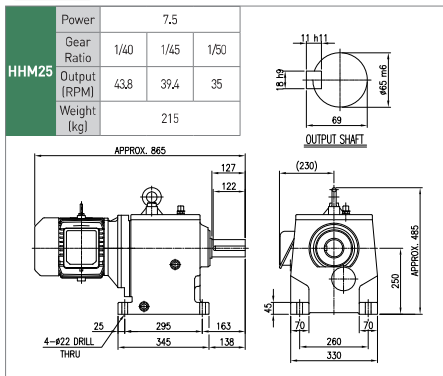
### 5.5kW



### 11kW

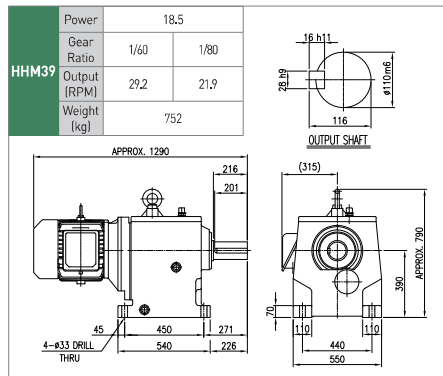
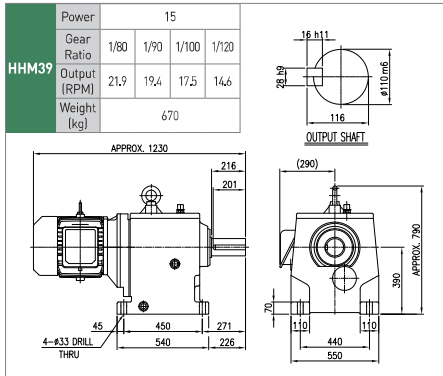
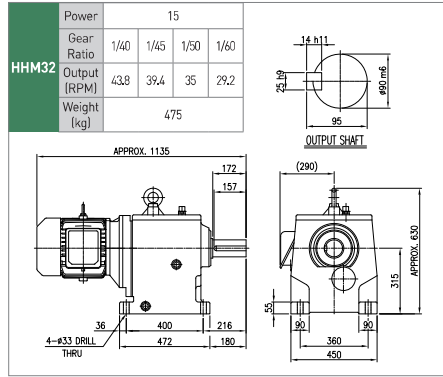
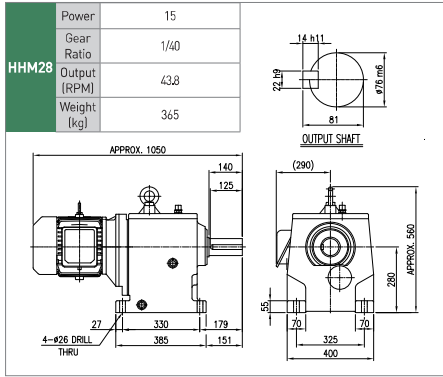


### 7.5kW

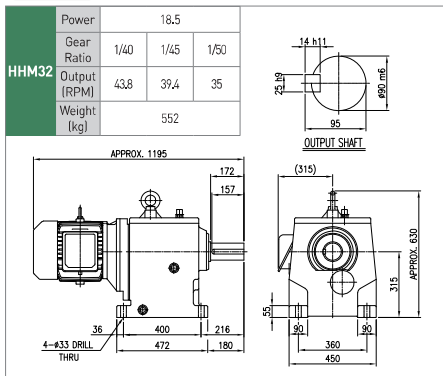


## H 수평형

15kW

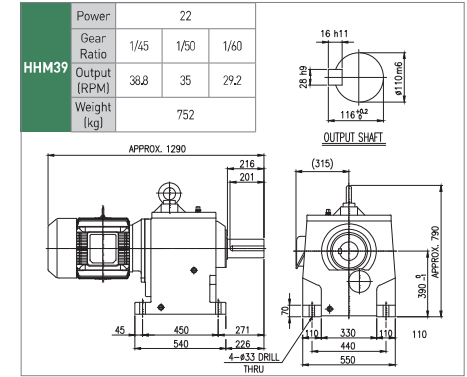
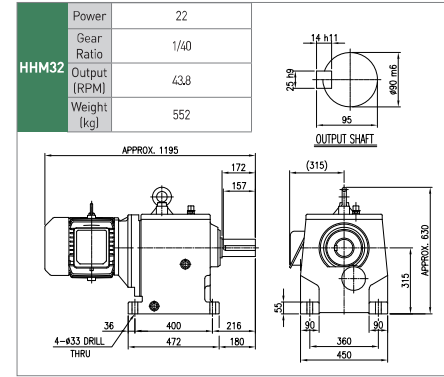


18.5kW

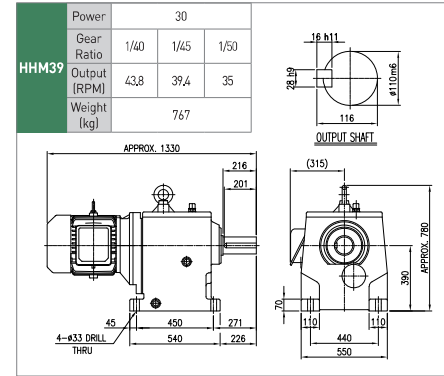


## H 수평형

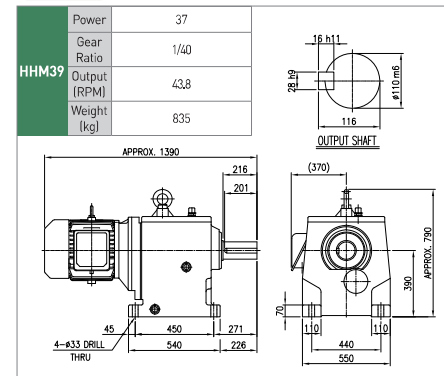
22kW



30kW

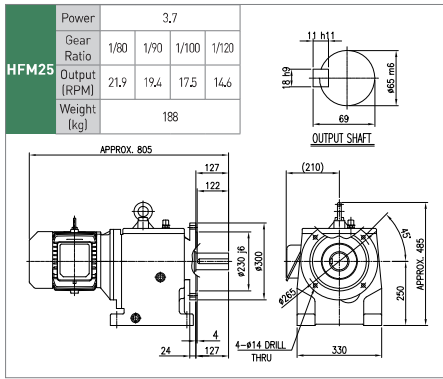


37kW

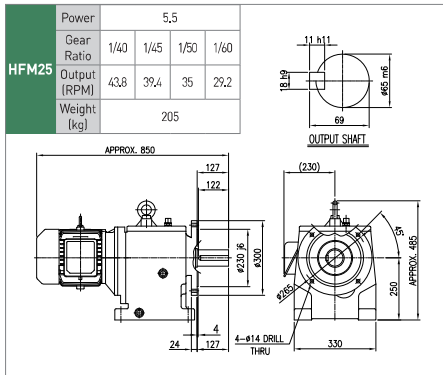


## H 수직형

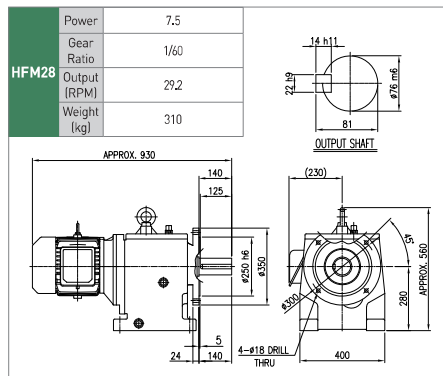
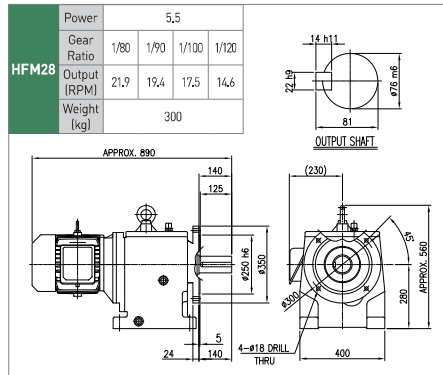
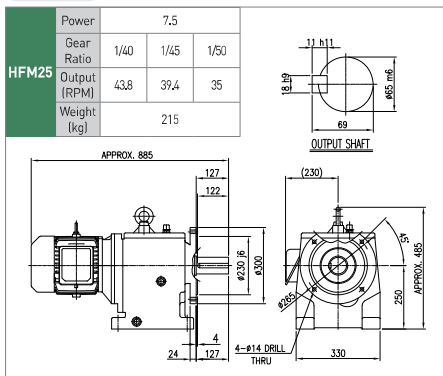
### 3.7kW



### 5.5kW

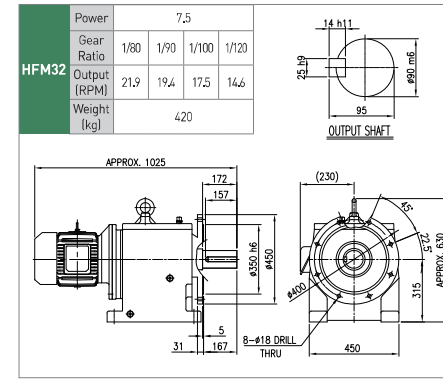


### 7.5kW

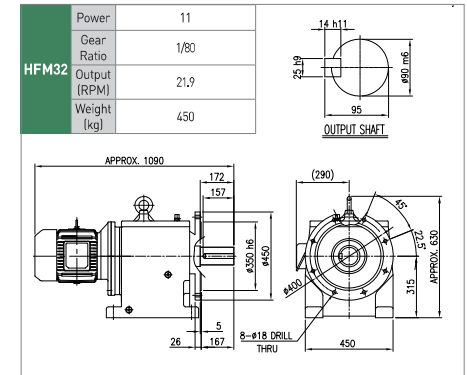
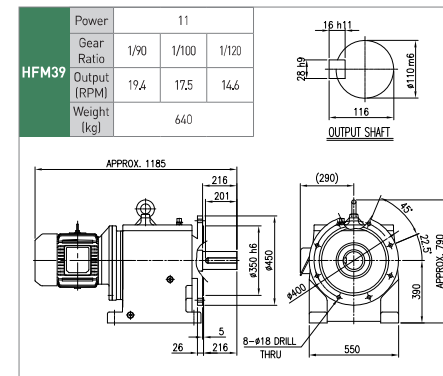
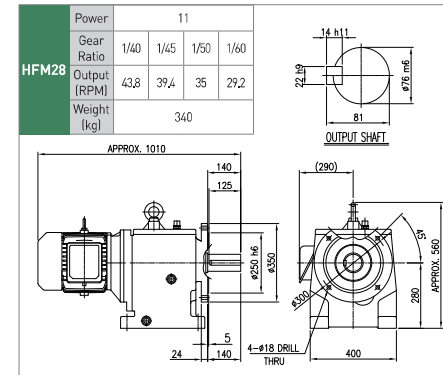


## H 수직형

### 7.5kW

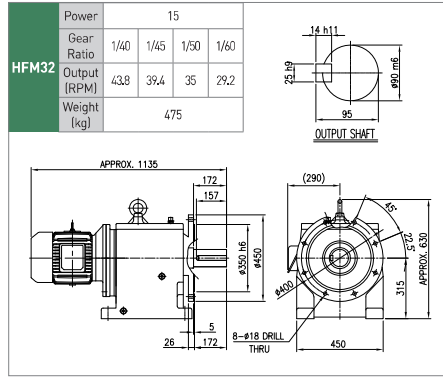
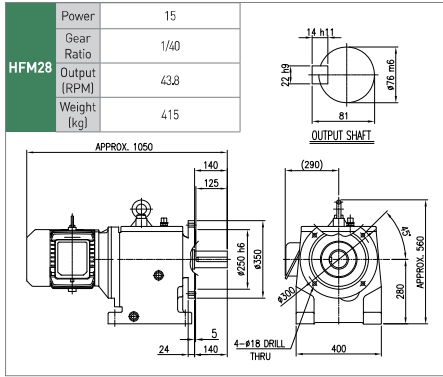


### 11kW



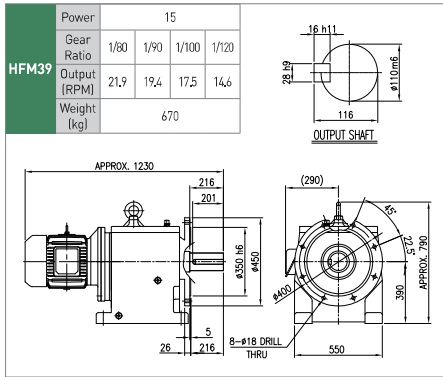
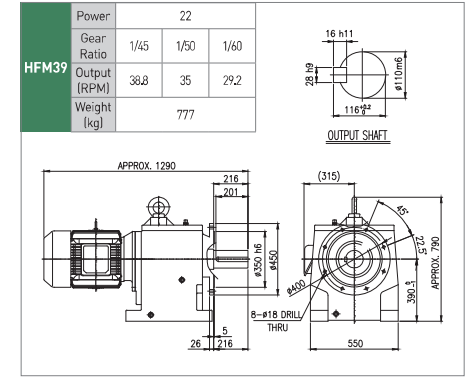
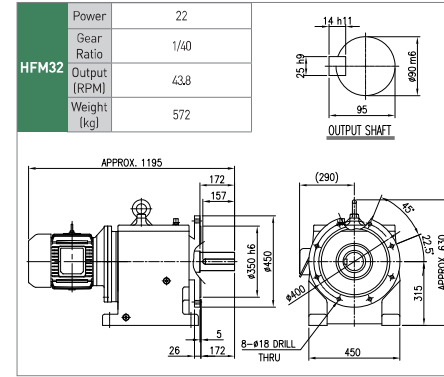
## H 수직형

15kW

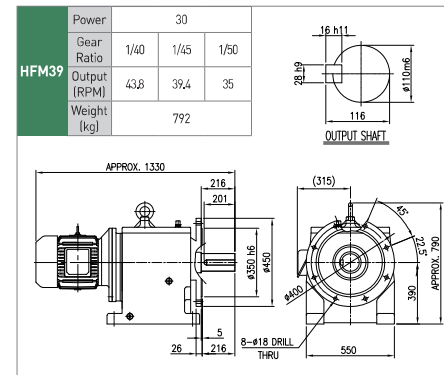


## H 수직형

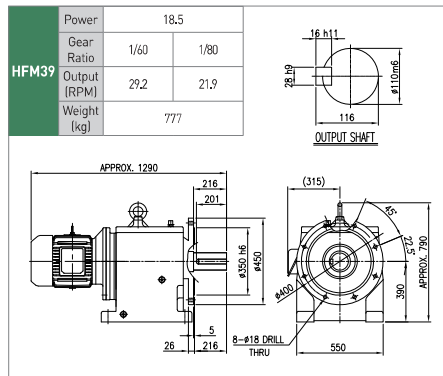
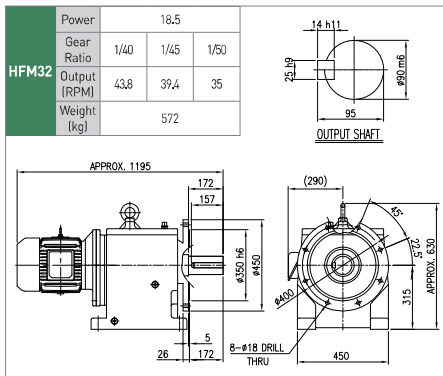
22kW



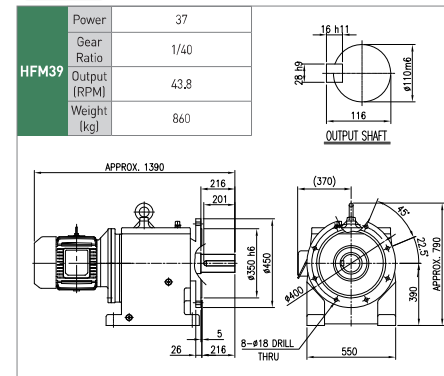
30kW



18.5kW

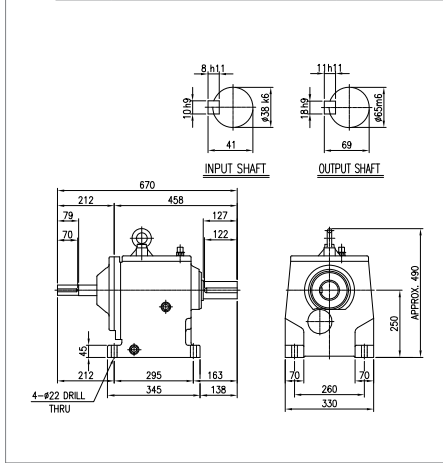


37kW

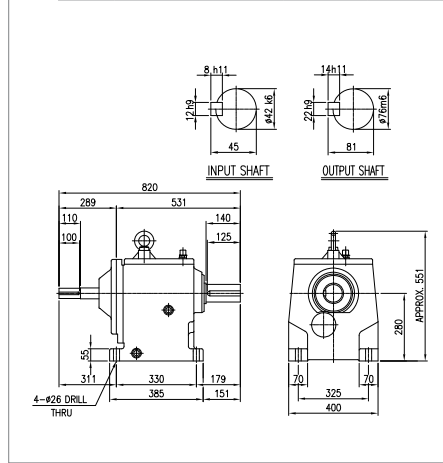


## H 라인파워(수평형)

HH25	Power	3.7	5.5	7.5
	Gear Ratio	1/80 - 1/120	1/40 - 1/60	1/40 - 1/50
	Weight (kg)	155		

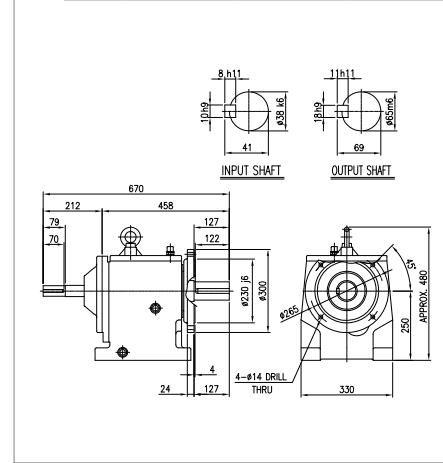


HH28	Power	5.5	7.5	11	15
	Gear Ratio	1/80 - 1/120	1/60	1/40 - 1/60	1/40
	Weight (kg)	250			

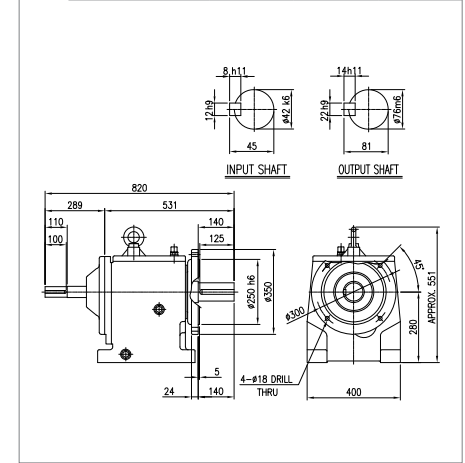


## H 라인파워(수직형)

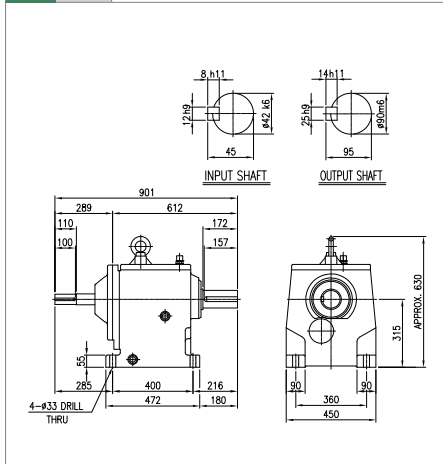
HF25	Power	3.7	5.5	7.5
	Gear Ratio	1/80 - 1/120	1/40 - 1/60	1/40 - 1/50
	Weight (kg)	155		



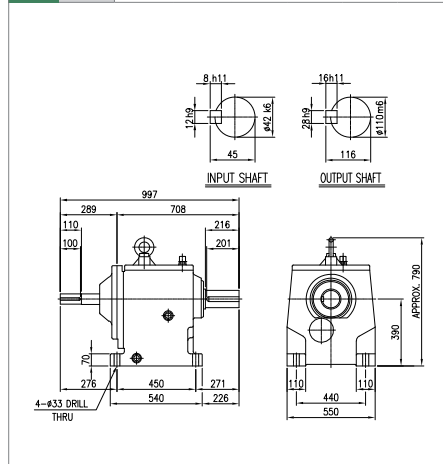
HF28	Power	5.5	7.5	11	15
	Gear Ratio	1/80 - 1/120	1/60	1/40 - 1/60	1/40
	Weight (kg)	250			



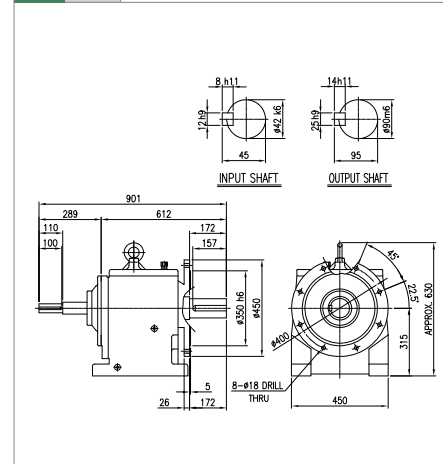
HH32	Power	7.5	11	15	18.5	22
	Gear Ratio	1/80 - 1/120	1/80	1/40 - 1/60	1/40 - 1/50	1/40
	Weight (kg)	360				



HH39	Power	11	15	18.5	22	30	37
	Gear Ratio	1/90 - 1/120	1/80 - 1/100	1/60 - 1/80	1/45 - 1/60	1/40 - 1/50	1/40
	Weight (kg)	540					



HF32	Power	7.5	11	15	18.5	22
	Gear Ratio	1/80 - 1/120	1/80	1/40 - 1/60	1/40 - 1/50	1/40
	Weight (kg)	360				



HF39	Power	11	15	18.5	22	30	37
	Gear Ratio	1/90 - 1/120	1/80 - 1/100	1/60 - 1/80	1/45 - 1/60	1/40 - 1/50	1/40
	Weight (kg)	540					

